

WAAS CH 90299 W20A	APP CRS 202°	Rwy Idg 6527 TDZE 1194 Apt Elev 1194
--	------------------------	---

RNAV (GPS) RWY 20
WALLA WALLA RGNL (ALW)

RNP APCH - GPS.



For uncompensated Baro-VNAV systems, LNAV/VNAV NA below -11°C or above 54°C. For inop ALS, increase LNAV/VNAV visibility to 1½ SM.
*RVR 1800 authorized with use of FD or AP or HUD to DA.

MALSR



MISSED APPROACH:
Climb to 4000 direct
CILON and hold.

ASOS 135.875	SPOKANE APP CON★ 133.15 379.15	WALLA WALLA TOWER★ 118.5 (CTAF) 0 289.4	GND CON 121.6 289.4	UNICOM 122.95
-----------------	-----------------------------------	--	------------------------	------------------

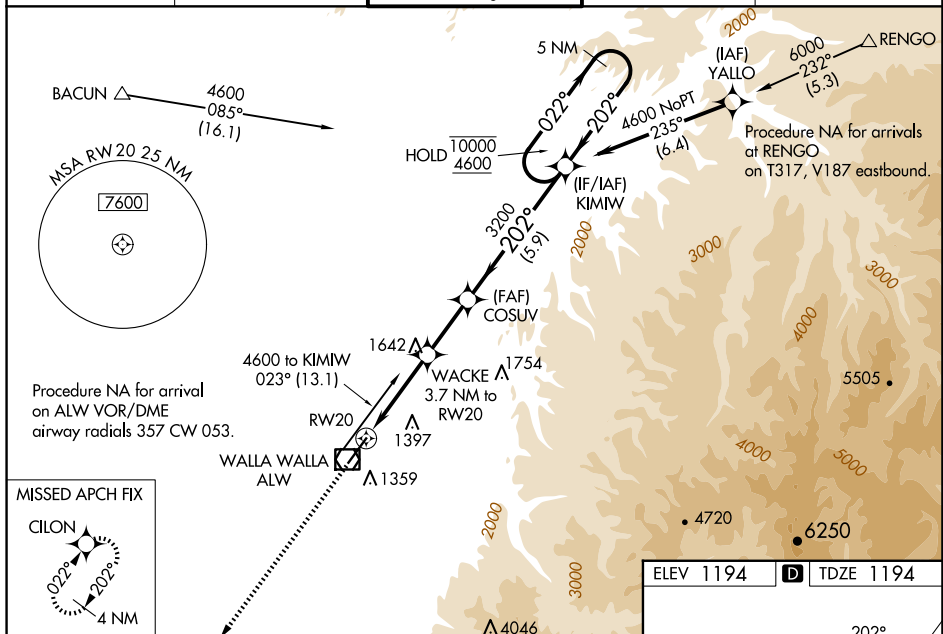


Diagram illustrating a 5 NM Holding Pattern. The pattern is defined by a 022° inbound and 202° outbound. Key points include RW20, WACKE (3.7 NM to RW20), COSUV (3200), KIMW, and 10000/4600. The diagram also shows the 2.9 NM and 0.9 NM segments of the pattern. The GP 3.00° and TCH 50 are indicated.

