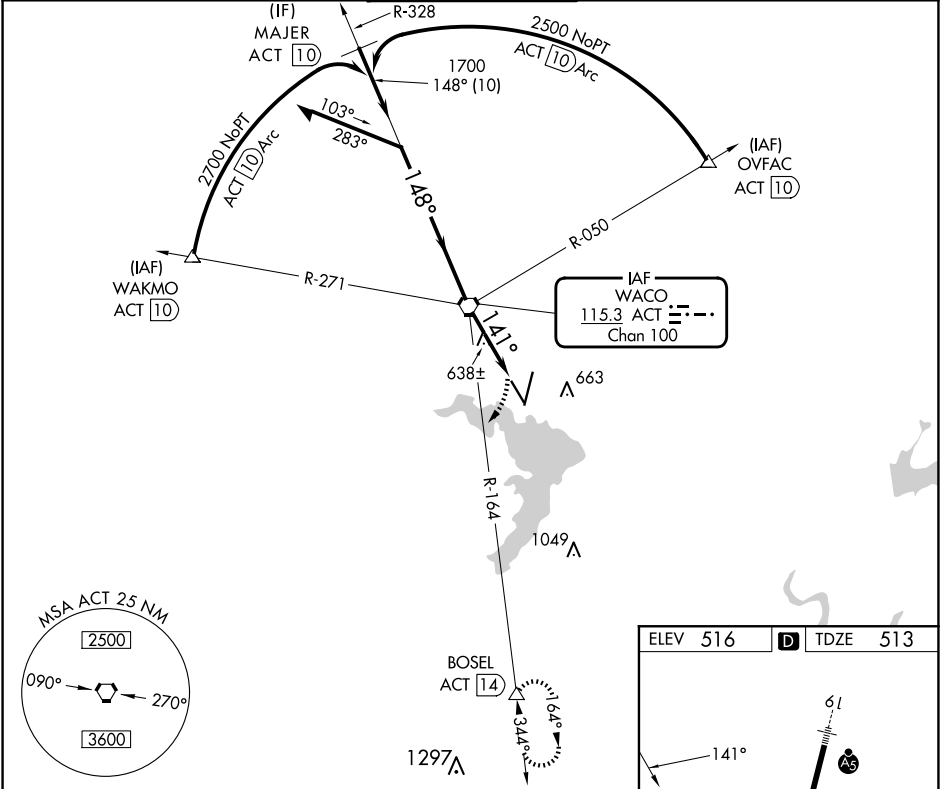


VORTAC ACT	APP CRS	Rwy Ldg	5103
115.3	141°	TDZE	513
Chan 100		Apt Elev	516

VOR RWY 14
WACO RGNL (ACT)

DME required.	MISSED APPROACH: Climbing right turn to 4000 on ACT VORTAC R-164 to BOSEL/ACT 14.00 DME and hold, Continue climb-in-hold to 4000.
ASR Rwy 14 helicopter visibility reduction below 3/4 SM NA. VDP NA with Mc Gregor Exec altimeter setting. When local altimeter setting not received, use Mc Gregor Exec altimeter setting and increase all MDAs 40 feet; and increase S-14 Cat C/D visibility 1/2 SM and Circling Cat D visibility 1/4 SM.	

ATIS 123.85	WACO APP CON ★ 127.65 227.125	WACO TOWER ★ 119.3(CTAF) 257.8	GND CON 121.9	UNICOM 122.95
----------------	----------------------------------	-----------------------------------	------------------	------------------



SC-3, 10 JUL 2025 to 07 AUG 2025

SC-3, 10 JUL 2025 to 07 AUG 2025