

WAAS CH <b>69420</b> <b>W32A</b>	APP CRS <b>322°</b>	Rwy Ldg <b>5103</b> TDZE <b>516</b> Apt Elev <b>516</b>
--	------------------------	---

RNAV (GPS) RWY 32  
WACO RGNL (ACT)

**ASR** DME/DME RNP-0.3 NA. When local altimeter setting not received use Mc Gregor Exec altimeter setting and increase all DA 31 feet and all MDA 40 feet; increase LPV and LNAV/VNAV all Cats and LNAV Cats C/D visibility  $\frac{1}{8}$  mile and Circling Cat D visibility  $\frac{1}{4}$  mile. For uncompensated Baro-VNAV systems, LNAV/VNAV NA below -13°C (9°F) or above 54°C (130°F). Baro-VNAV NA when using Mc Gregor Exec altimeter setting. VDP NA with Mc Gregor Exec altimeter setting.

**MISSED APPROACH:**  
Climb to 4000 direct  
EVVIS and hold,  
continue climb-in-hold  
to 4000.

ATIS <b>123.85</b>	WACO APP CON ★ <b>127.65 227.125</b>	WACO TOWER ★ <b>119.3(CTAF) 0 257.8</b>	GND CON <b>121.9</b>	UNICOM <b>122.95</b>
-----------------------	---	--	-------------------------	-------------------------

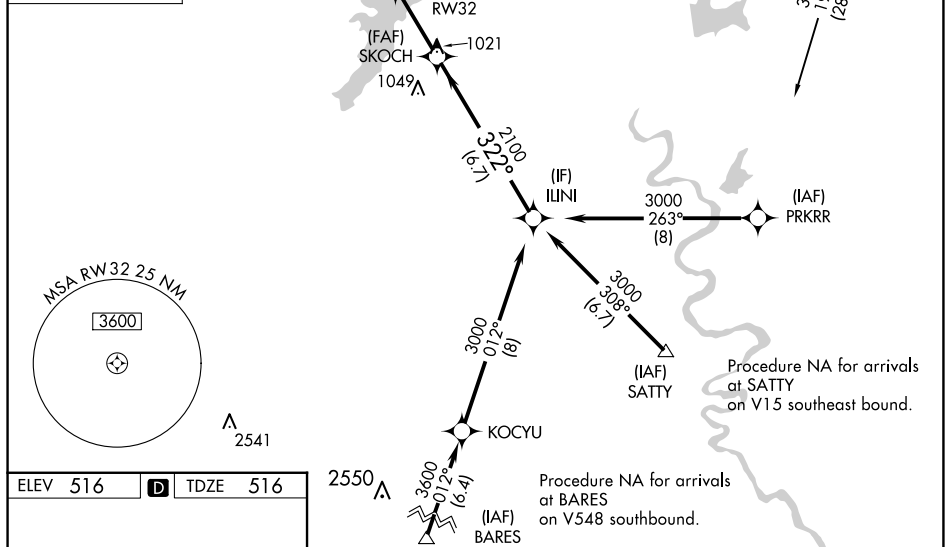
MISSED APCH FIX

4 NM

42°

322°

EVVIS



CATEGORY	A	B	C	D
LPV DA	766-3/4 250 (300-3/4)			
LNAPV/VNAV DA	773-3/4 257 (300-3/4)			
LNAPV MDA	860-1 344 (400-1)			
CIRCLING	940-1 424 (500-1)	980-1 464 (500-1)	1020-1 1/2 504 (600-1 1/2)	1160-2 644 (700-2)