

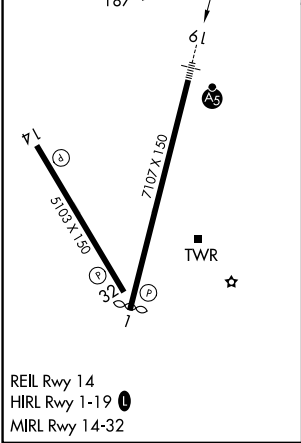
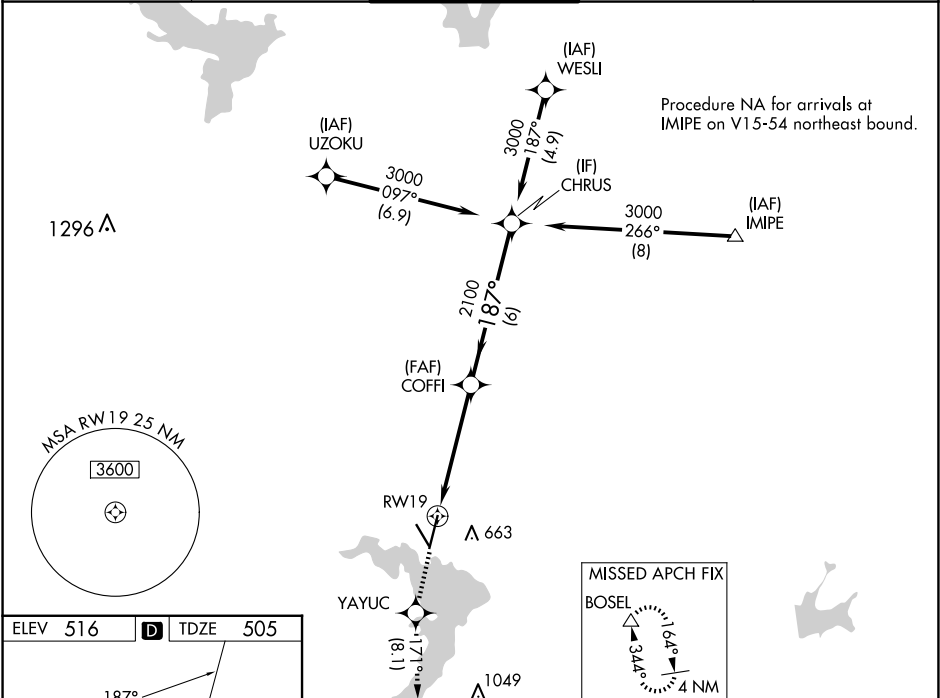
WAAS CH <b>82119</b> <b>W19A</b>	APP CRS <b>187°</b>	Rwy Ldg TDZE <b>505</b> Apt Elev <b>516</b>
--	------------------------	---

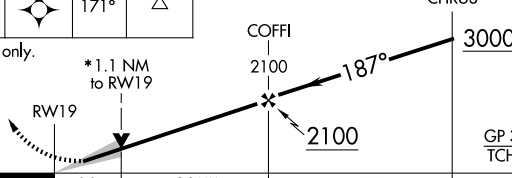

RNAV (GPS) RWY 19

WACO RGNL (ACT)

RNP APCH - GPS.	MALSR 	MISSED APPROACH: Climb to 4000 direct YAYUC and on track 171° to BOSEL and hold, continue climb-in-hold to 4000.
For uncompensated Baro-VNAV systems, LNAV/VNAV NA below -8°C or above 54°C. For inop ALS, increase LNAV/VNAV visibility all Cats to RVR 4000. ASR **RVR 1800 authorized with use of FD or AP or HUD to DA.		

ATIS <b>123.85</b>	WACO APP CON ★ <b>127.65 227.125</b>	WACO TOWER ★ <b>119.3 (CTAF) 0 257.8</b>	GND CON <b>121.9</b>	UNICOM <b>122.95</b>
-----------------------	---	---	-------------------------	-------------------------



4000 ↑	YAYUC ✱	tr 171°	BOSEL △	
*LNAV only.				
				
CATEGORY	A	B	C	D
LPV DA**	705/24 200 (200-½)			
LNAV/VNAV DA	755/24 250 (300-½)			
LNAV MDA	900/24	395 (400-½)	900/35	395 (400-¾)
 CIRCLING	940-1 424 (500-1)	980-1 464 (500-1)	1020-1½ 504 (600-1½)	1160-2 644 (700-2)