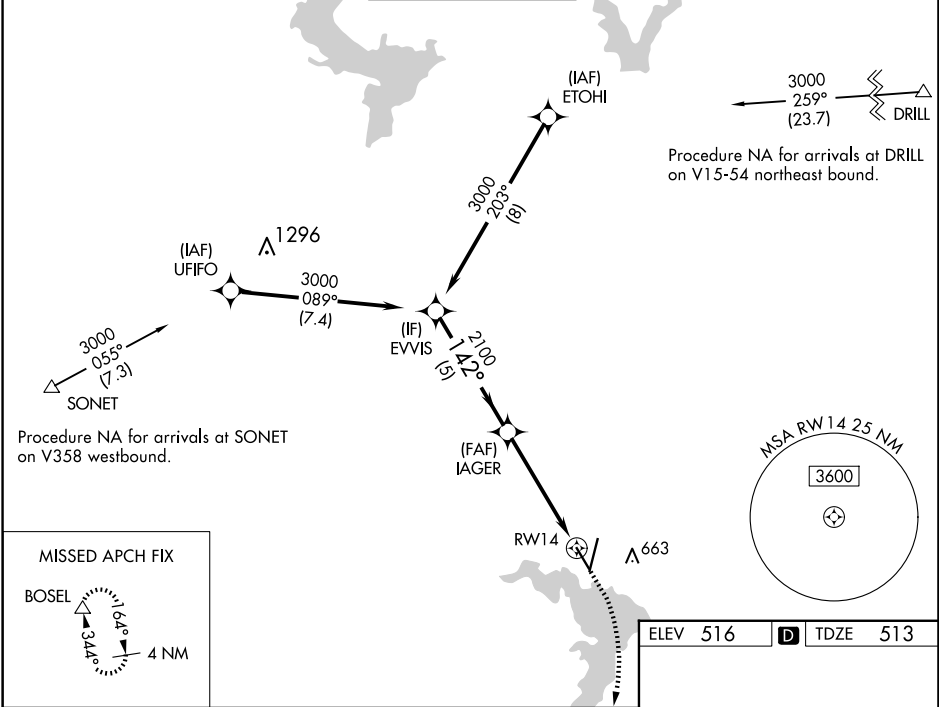


WAAS CH <b>56520</b> <b>W14A</b>	APP CRS <b>142°</b>	Rwy Ldg TDZE Apt Elev	<b>5103</b> <b>513</b> <b>516</b>
--	------------------------	-----------------------------	---

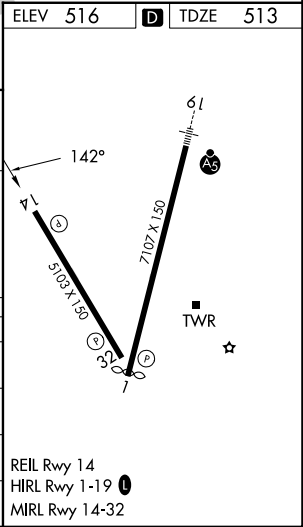
RNAV (GPS) RWY 14  
WACO RGNL (ACT)

RNP APCH.	MISSED APPROACH: Climb to 1000 then climbing right turn to 4000 direct BOSEL and hold, continue climb-in-hold to 4000.
▼ ASR Rwy 14 helicopter visibility reduction below ¾ SM NA. For uncompensated Baro-VNAV systems, procedure NA below -8°C or above 54°C.	

ATIS <b>123.85</b>	WACO APP CON * <b>127.65 227.125</b>	WACO TOWER * <b>119.3 (CTAF) 0 257.8</b>	GND CON <b>121.9</b>	UNICOM <b>122.95</b>
-----------------------	---	---	-------------------------	-------------------------



VGSi and RNAV glidepath not coincident (VGSi Angle 3.00/TCH 58).				
GP 3.00° TCH 55				
Elevations: 3000, 2100, 1420, 1000, 4000				
Distances: 5 NM, 3.4 NM, 1.4 NM				
CATEGORY	A	B	C	D
LPV DA	763-¾ 250 (300-¾)			
LNAV/VNAV DA	763-¾ 250 (300-¾)			
LNAV MDA	1020-1	507 (600-1)	1020-1¾	507 (600-1¾)
CIRCLING	1020-1	504 (600-1)	1020-1½ 504 (600-1½)	1160-2 644 (700-2)



SC-3, 10 JUL 2025 to 07 AUG 2025

SC-3, 10 JUL 2025 to 07 AUG 2025