

| | | |
|--|------------------------|---|
| WAAS CH 65919 W01A | APP CRS 007° | Rwy Ldg TDZE 511 Apt Elev 516 |
|--|------------------------|---|

RNAV (GPS) RWY 1

WACO RGNL (ACT)

RNP APCH - GPS.

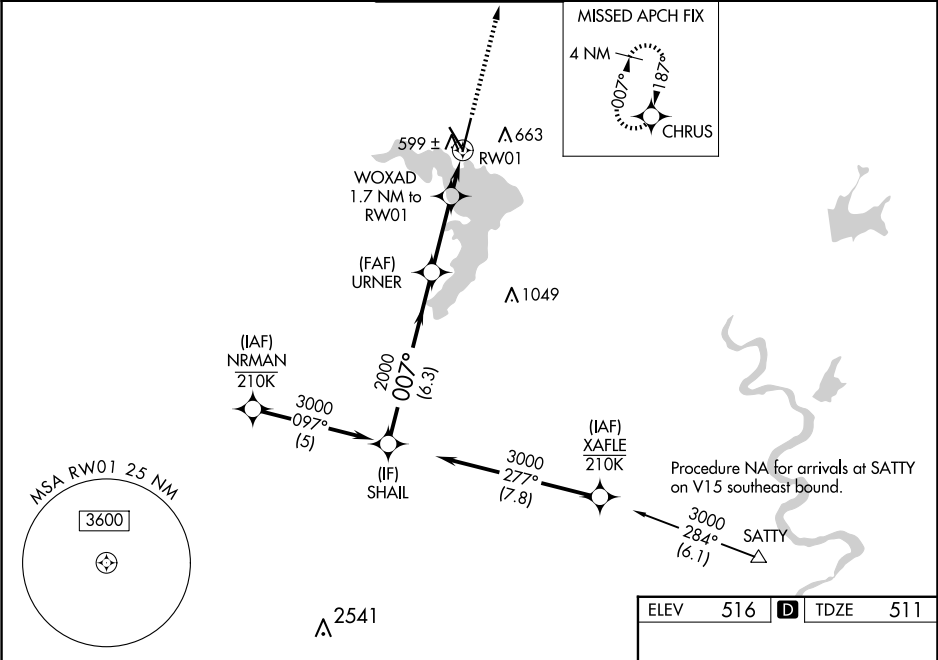
⚠

ASR

For uncompensated Baro-VNAV systems, LNAV/VNAV NA below -8°C or above 54°C. Baro-VNAV and VDP NA when using PWG altimeter setting. Rwy 1 helicopter visibility reduction below ¾ SM NA. When local altimeter setting not received, use PWG altimeter setting and increase LPV DA to 792 feet and all visibilities ½ SM. Increase LNAV/VNAV DA to 813 feet; increase all MDAs 40 feet and LNAV visibility Cat C/D ½ SM, and Circling visibility Cat D ¼ SM.

MISSED APPROACH:
Climb to 3000 direct
CHRU and hold.

| | | | | |
|-----------------------|---|---|-------------------------|-------------------------|
| ATIS 123.85 | WACO APP CON ★ 127.65 227.125 | WACO TOWER ★ 119.3 (CTAF) 0 257.8 | GND CON 121.9 | UNICOM 122.95 |
|-----------------------|---|---|-------------------------|-------------------------|



| | | | | | | | |
|--------------------|----------------------|----------------------|-------------------------|----------------------------|--|-------------------|------|
| SHAIL | | URNER | | WOXAD 1.7 NM to RW01 | | 3000 | CHRU |
| 3000 | | 2000 | | 1100 | | 0.9 NM to RW01 | |
| GP 3.00° TCH 55 | | 2000 | | 0.9 NM to RW01 | | RW01 | |
| 6.3 NM | | 2.8 NM | | 0.8 NM | | 0.9 NM | |
| CATEGORY | A | B | C | D | | | |
| LPV DA | 761-¾ | | 250 (300-¾) | | | | |
| LNAV/ VNAV DA | 782-⅞ | | 271 (300-⅞) | | | | |
| LNAV MDA | 860-1 | | 349 (400-1) | | | | |
| CIRCLING | 940-1 424 (500-1) | 980-1 464 (500-1) | 1020-1½ 504 (600-1½) | 1160-2 644 (700-2) | | | |

