

25163

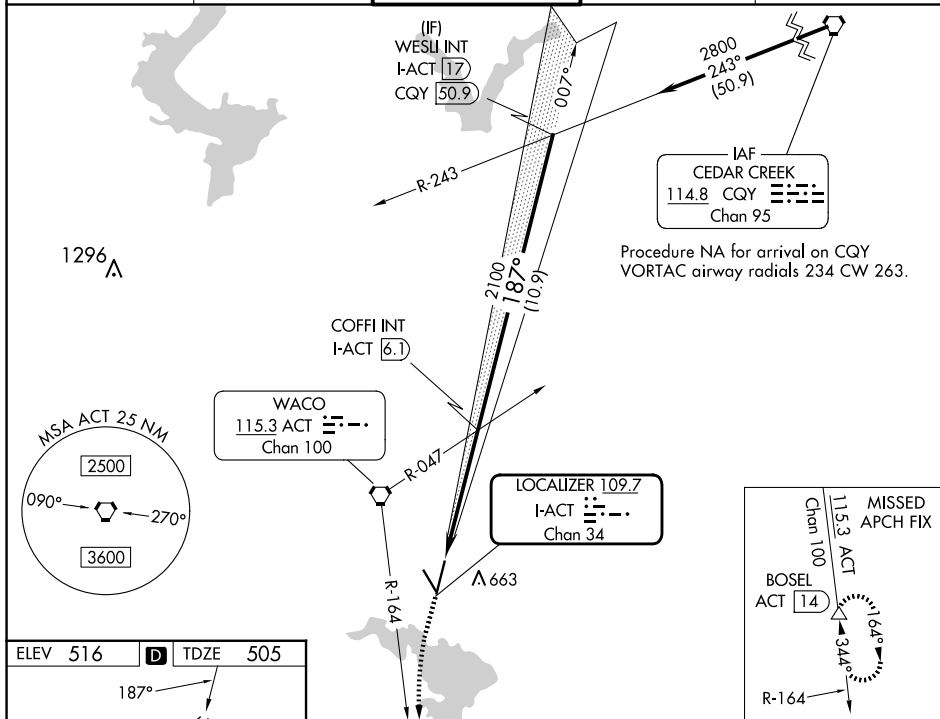
ILS or LOC RWY 19
WACO RGNL (ACT)

MALS

MISSED APPROACH: Climb to 1500 then climbing left turn to 4000 on ACT VORTAC R-164 to BOSEL 14 DME and hold, continue climb-in-hold to 4000.

T ** RVR 1800 authorized with use of FD or AP or HUD to DA.
A
 ASR

ATIS 123.85	WACO APP CON ★ 127.65 227.125	WACO TOWER ★ 119.3 (CTAF) 0 257.8	GND CON 121.9	UNICOM 122.95
-----------------------	---	---	-------------------------	-------------------------



ELEV 516 D TDZE 505

187°

5103 X 130

7107 X 150

TWR

REIL Rwy 14
HIRL Rwy 1-19
MIRL Rwy 14-32

FAF to MAP 4.9 NM					
Knots	60	90	120	150	180
Min:Sec	4:54	3:16	2:27	1:58	1:38

1500 ↑	4000 ACT R-164	BOSEL △	WESLI INT I-ACT 17 2800 GS 3.00° TCH 55	
*LOC only. *I-ACT 2.3 I-ACT 1.3 COFFI INT I-ACT 6.1 2100 187° 2100 1.1 3.8 NM 10.9 NM				
CATEGORY	A	B	C	D
S-ILS 19**	705/24 200 (200-½)			
S-LOC 19	900/24 395 (400-½)	900/35 395 (400-¾)		
CIRCLING	940-1 424 (500-1)	980-1 464 (500-1)	1020-1½ 504 (600-1½)	1160-2 644 (700-2)

WACO RGNL (ACT)
ILS or LOC RWY 19

SC-3, 10 JUL 2025 to 07 AUG 2025