

LOC/DME I-VCT	APP CRS	Rwy Ldg
111.5	128°	9111
Chan 52		TDZE 115
		Apt Elev 115

ILS or LOC RWY 13

VICTORIA RGNL (VCT)

DME required.

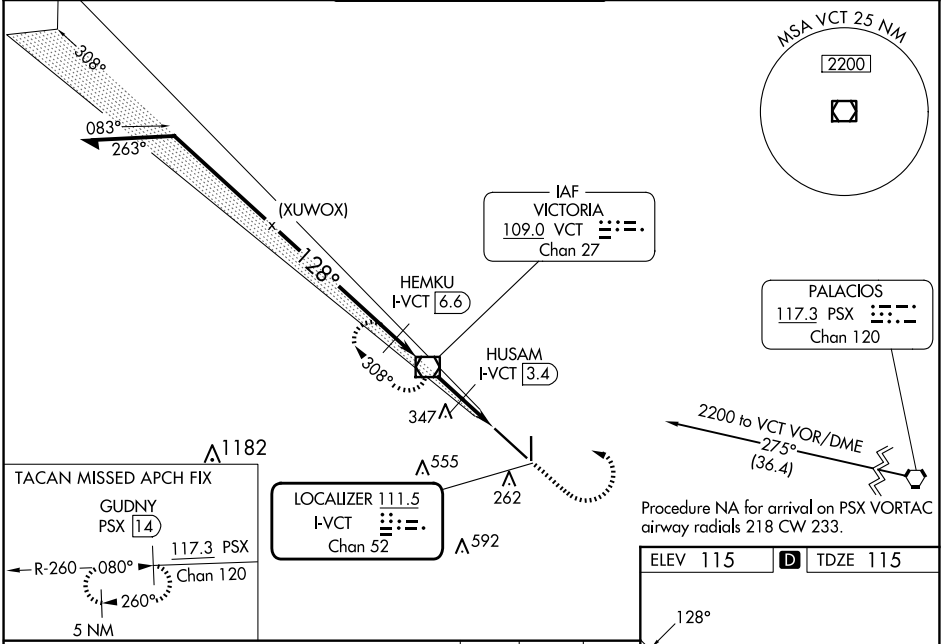
For inop ALS, increase S-ILS 13 Cat E visibility to ¾ SM and S-LOC 13 Cat E visibility to 1 SM.

MALSR

MISSED APPROACH:

Climb to 2100 then left turn direct VCT VOR/DME and hold. (TACAN aircraft climb to 2100 then left turn on heading 120° and on PSX VORTAC R-260 to GUDNY/PSX 14 DME and hold W, RT, 080° inbound).

ATIS 119.025	HOUSTON CENTER 135.05 353.6	VICTORIA TOWER ★ 126.075 (CTAF) 257.95	GND CON 120.525 239.25	UNICOM 122.7
------------------------	---------------------------------------	---------------------------------------------------------	----------------------------------	------------------------



VCT VOR/DME					
Remain within 15 NM					
2200					
308°					
HEMKU I-VCT 6.6					
1700					
128°					
GS 3.00° TCH 53					
1700					
660					
3.2 NM					
0.7 NM					
0.9 NM					
CATEGORY	A	B	C	D	E
S-ILS 13	315-½ 200 (200-½)				
S-LOC 13	440-½ 325 (400-½)				
CIRCLING	580-1	465 (500-1)	820-2 705 (800-2)	880-2½ 765 (800-2½)	NA

