

WAAS CH 53611 W22A	APP CRS 223°	Rwy Ldg 4974 TDZE 23 Apt Elev 24
--	------------------------	---

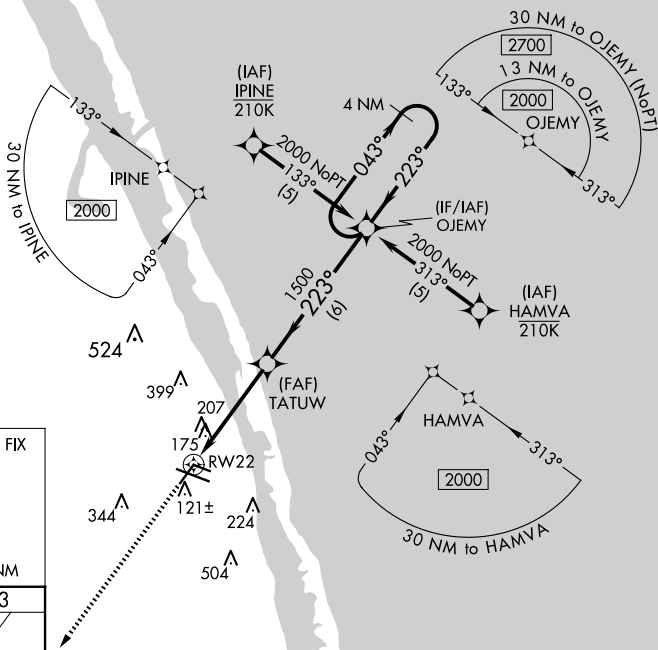
RNAV (GPS) RWY 22

VERO BEACH RGNL (VRB)

T Circling to Rwy 30R NA at night. For uncompensated Baro-VNAV systems, LNAV/VNAV NA below 0°C (32°F) or above 43°C (109°F). DME/DME RNP-0.3 NA. When local altimeter setting not received, use Fort Pierce altimeter setting and increase LPV DA to 363 feet and all visibilities $\frac{1}{8}$ SM; increase LNAV/VNAV DA to 567 feet and all visibilities $\frac{1}{8}$ SM; increase all MDAs 40 feet and LNAV Cat C/D visibility $\frac{1}{8}$ SM and Circling Cat C/D visibility $\frac{1}{4}$ SM. Baro-VNAV and VDP NA when using Fort Pierce altimeter setting. Rwy 22 helicopter visibility reduction below $\frac{3}{4}$ SM NA.

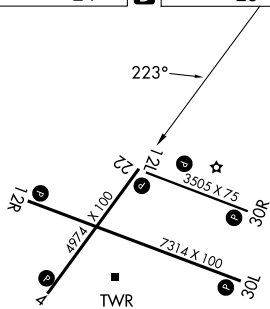
MISSED APPROACH:
Climb to 2000 direct
JINSO and hold.

ATIS 120.575	PALM BEACH APP CON 123.625 225.4 (N)	VERO BEACH TOWER ★ 126.3 (CTAF) 0	GND CON 127.45	CLNC DEL 134.975	UNICOM 122.95
------------------------	--	---	--------------------------	----------------------------	-------------------------



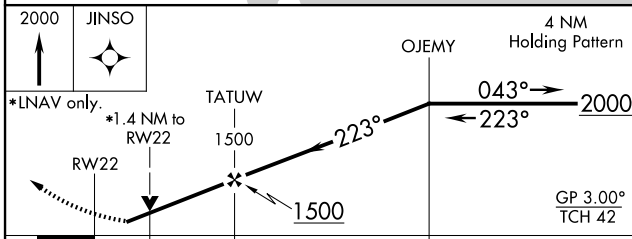
A circular radar plot with a central sun-like symbol. Two radial lines are drawn from the center: one pointing towards the top-left labeled '043°' and another pointing towards the top-right labeled '223°'. A dashed arc is drawn at a distance of '4 NM' from the center.

ELEV	24	D	TDZE	23
------	----	----------	------	----



MIRL Rwy's 4-22, 12R-30L,
and 12L-30R

REIL Rwys 4, 12R, 22 and 30L L



		1.4		3.1 NM		6 NM			
CATEGORY		A		B		C		D	
LPV	DA			340-1		317 (400-1)			
LNAV/ VNAV	DA			544-1 ³ / ₄		521 (600-1 ³ / ₄)			
LNAV	MDA	520-1		497 (500-1)		520-1 ³ / ₈		497 (500-1 ³ / ₈)	
CIRCLING		560-1		536 (600-1)		660-1 ³ / ₄ 636 (700-1 ³ / ₄)		820-2 ¹ / ₂ 796 (800-2 ¹ / ₂)	