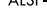
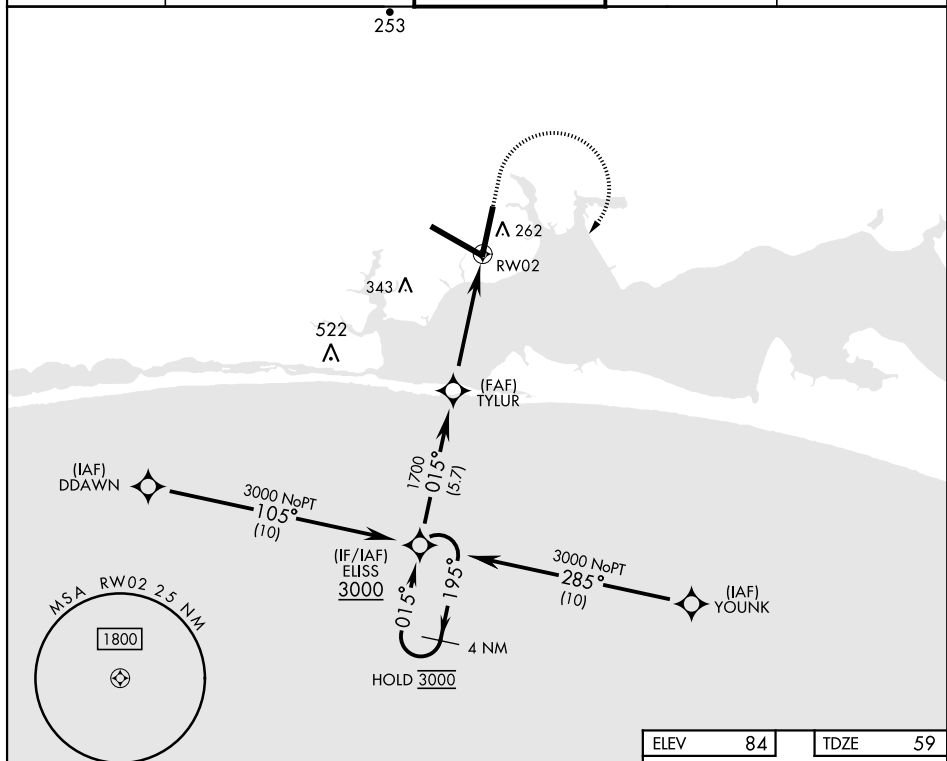
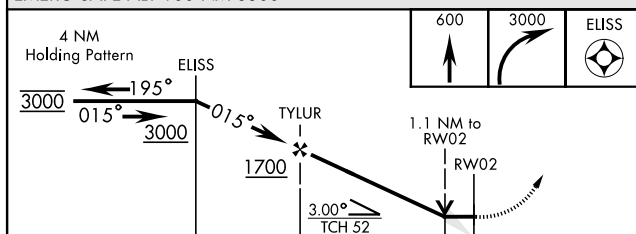


RNAV (GPS) RWY 2

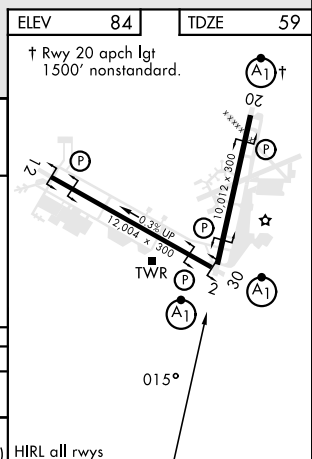
APCH CRS 015°		Rwy Idg 10,012 TDZE 59 Arpt Elev 84		[USAF]	EGLIN AFB DESTIN FORT WALTON BEACH (KVP5)	
RNP APCH- GPS				ALSF-1 	MISSED APPROACH: Climb to 600, then climbing right turn to 3000 direct ELISS and hold.	
* When ALS inop, increase CAT AB RVR to 55 and vis to 1 mile, CAT CDE RVR to 60, vis to 1½ miles.						
ATIS ★ 134.625 273.5		APP CON 125.1 281.45 271°- 089° 132.1 360.6 090°- 270°		TOWER 118.2 353.65		GND CON 121.8 335.8
						CLNC DEL 127.7 377.2



EMERG SAFE ALT 100 NM 3500



CATEGORY	A	B	C	D	E
LNAV MDA *	460/24	401 (400-¾)	460/40	401 (400-¾)	
CIRCLING	600-1	516 (600-1)	680-1½ 596 (600-1½)	680-2 596 (600-2)	700-2½ 616 (700-2½)



VALPARAISO DESTIN FT WALTON BEACH, FLORIDA

EGLIN AFB DESTIN FORT WALTON BEACH (KVPS)

Amdt 1 16MAY24

30°29'N-86°32'W

RNAV (GPS) RWY 2

SE-3, 10 JUL 2025 to 07 AUG 2025