

ILS or LOC Z RWY 30

LOC/DME I-VPS 109.1 Chgn 28	APCH CRS 303°	Rwy Idg 12,004 TDZE 68 Arpt Elev 84
---	-------------------------	--

[USAF]

EGLIN AFB DESTIN FORT WALTON BEACH(KVPS)

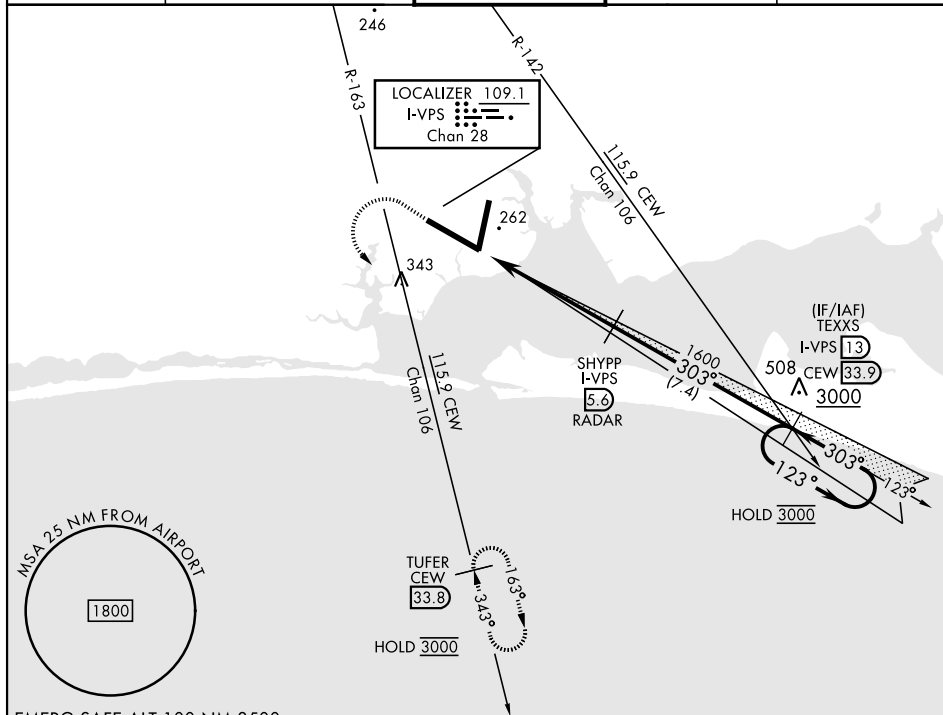
DME required



MISSED APPROACH: Climb to 600, then climbing left turn to 3000 on CEW VORTAC R-163 to TUFER/33.8 DME and hold.

****When ALS inop increase CAT AB RVR to 55, vis to 1 mile;
CAT CDE RVR to 50, vis to 1 mile.**

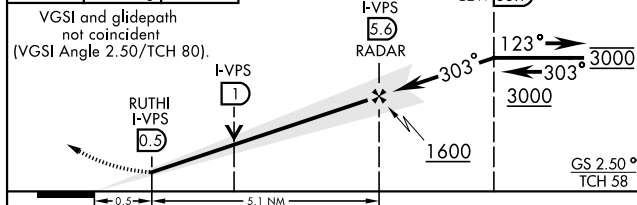
ATIS ★ 134.625 273.5	APP CON 125.1 281.45 271° - 089° 132.1 360.6 090° - 270°	TOWER 118.2 353.65	GND CON 121.8 335.8	CLNC DEL 127.7 377.2
-------------------------	--	-----------------------	------------------------	-------------------------




EMERG SAFE ALT 100 NM 3500

600 ↑	3000 ↙ CEW R-163	TUFER CEW 33.8
----------	---------------------------	----------------------

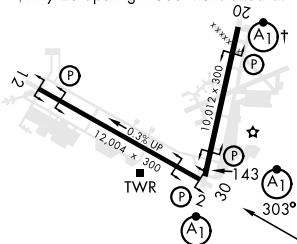
VGSI and glidepath
not coincident
(VGSI Angle 2.50/TCH 80).



CATEGORY	A	B	C	D	E
S-LS 30 *	268/24		200	(200-½)	
S-LOC 30 **	400/24	332 (400-½)	400/26		332 (400-½)
 CIRCLING	600-1	516 (600-1)	680-1½ 596 (600-1½)	680-2 596 (600-2)	700-2¼ 616 (700-2¼)

ELEV	84		TDZE	68
------	----	--	------	----

†Rwy 20 apch lgt 1500' nonstandard.



HIRL all rwys

FAF to MAP 5.1 NM					
Knots	60	90	120	150	180
Min:Sec	5:06	3:24	2:33	2:02	1:42

VALPARAISO DESTIN FT WALTON BEACH, FLORIDA

EGLIN AFB DESTIN FORT WALTON BEACH(KVPS)

Orig 16MAY24

30°29'N-86°32'W

ILS or LOC Z RWY 30

SE-3, 10 JUL 2025 to 07 AUG 2025

SE-3, 10 JUL 2025 to 07 AUG 2025