

## ILS or LOC Z RWY 20

LOC/DME I-CAH <b>109.1</b> Chan <b>28</b>	APCH CRS <b>195°</b>	Rwy Idg <b>10,012</b> TDZE <b>62</b> Arpt Elev <b>84</b>
---	-------------------------	--

[USAF] EGLIN AFB DESTIN FORT WALTON BEACH (KVPS)

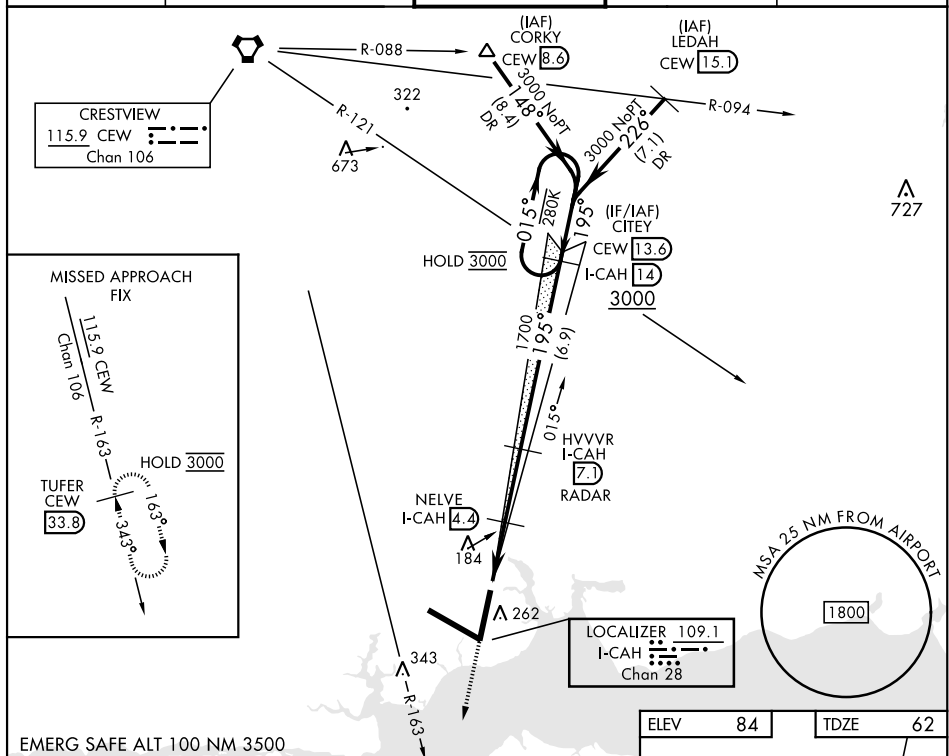
DME required

ALSF-1

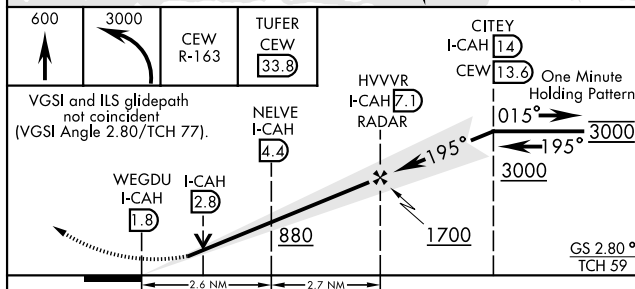
**MISSED APPROACH:** Climb to 600, then climbing left turn to 3000 on CEW VORTAC R-163 to TUFER/33.8 DME and hold.

\* \* When ALS inop increase RVR to 55, vis to 1 mile.

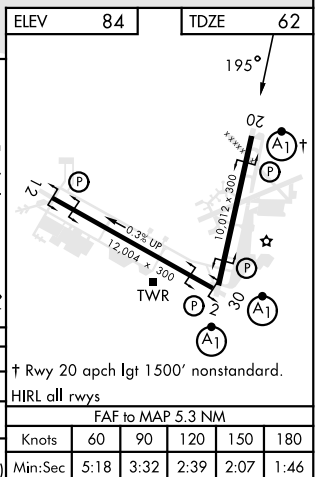
ATIS ★ 134.625 273.5	APP CON 125.1 281.45 271°- 089° 132.1 360.6 090°- 270°	TOWER 118.2 353.65	GND CON 121.8 335.8	CLNC DEL 127.7 377.2
-------------------------	--	-----------------------	------------------------	-------------------------



EMERG SAFE ALT 100 NM 3500



CATEGORY	A	B	C	D	E
S-ILS 20 *	262/24		200	(200-½)	
S-LOC 20 **	440/24	378 (400-½)	440/35	378	(400-¾)
C CIRCLING	600-1	516 (600-1)	680-1½ 596 (600-1½)	680-2 596 (600-2)	700-2¼ 616 (700-2¼)



VALPARAISO DESTIN FT WALTON BEACH, FLORIDA

EGLIN AFB DESTIN FORT WALTON BEACH (KVPS)

Orig 16MAY24

30°29'N-86°32'W

## ILS or LOC Z RWY 20

SE-3, 10 JUL 2025 to 07 AUG 2025

SE-3, 10 JUL 2025 to 07 AUG 2025