

ILS or LOC Y RWY 30

LOC/DME I-VPS 109.1 Chan 28	APCH CRS 303°	Rwy Idg 12,004 TDZE 68 Arpt Elev 84
---	-------------------------	--

[USAF] EGLIN AFB DESTIN FORT WALTON BEACH (KVPS)

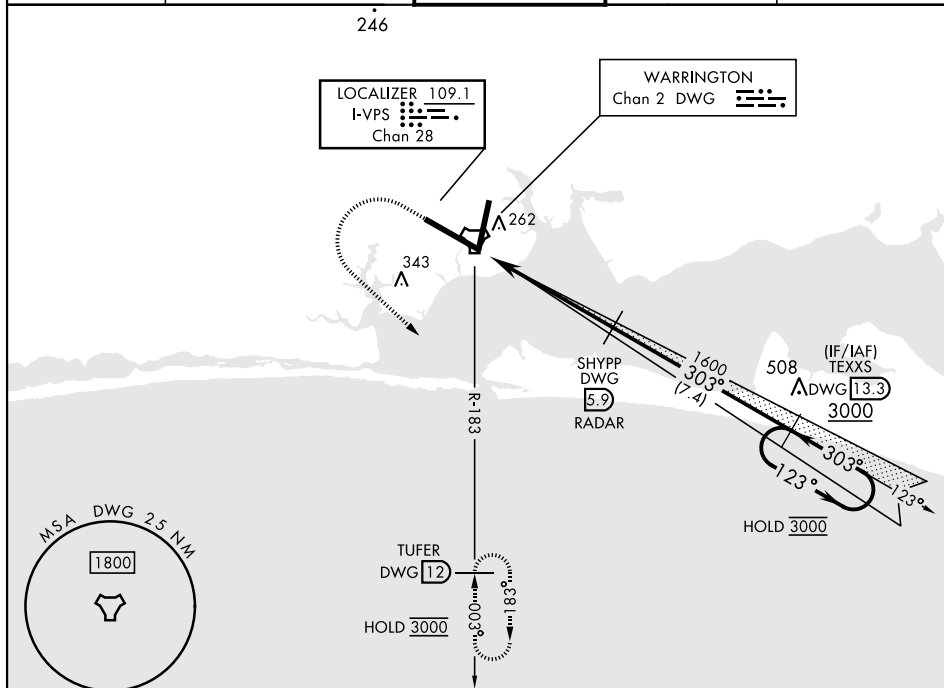
DME required

* When ALS inop, increase RVR to 40, vis to $\frac{3}{4}$ mile.
 ** When ALS inop increase CAT AB RVR to 55, vis to 1 mile;
 CAT CDE RVR to 50, vis to 1 mile.

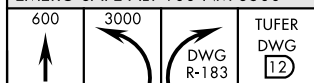


MISSED APPROACH: Climb to 600, then climbing left turn to 3000 and intercept DWG TACAN R-183 to TUFER/12 DME and hold.

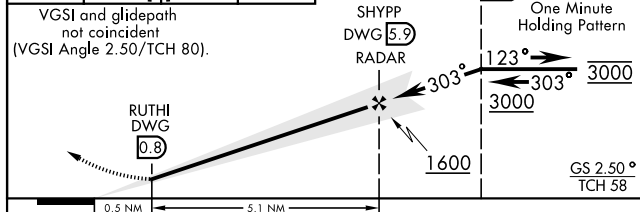
ATIS ★	APP CON		TOWER	GND CON	CLNC DEL
134.625 273.5	125.1 281.45	271° - 089°	118.2 353.65	121.8 335.8	127.7 377.2
	132.1 360.6	090° - 270°			



EMERG SAFE ALT 100 NM 3500



VGSI and glidepath
not coincident
(VGSI Angle 2.50/TCH 80).



CATEGORY	A	B	C	D	E
S-LS 30 *	268/24		200	(200-½)	
S-LOC 30 **	400/24	332 (400-½)	400/26		332 (400-½)
C CIRCLING	600-1	516 (600-1)	680-1 596 (600-½)	680-2 596 (600-2)	700-2½ 616 (700-2¼)

ELEV	84	TDZE	68
------	----	------	----

† Rwy 20 apch lgt
1500' nonstandard.

HIRL all rwys

FAF to MAP 5.1 NM					
Knots	60	90	120	150	180
Min:Sec	5:06	3:24	2:33	2:02	1:42