


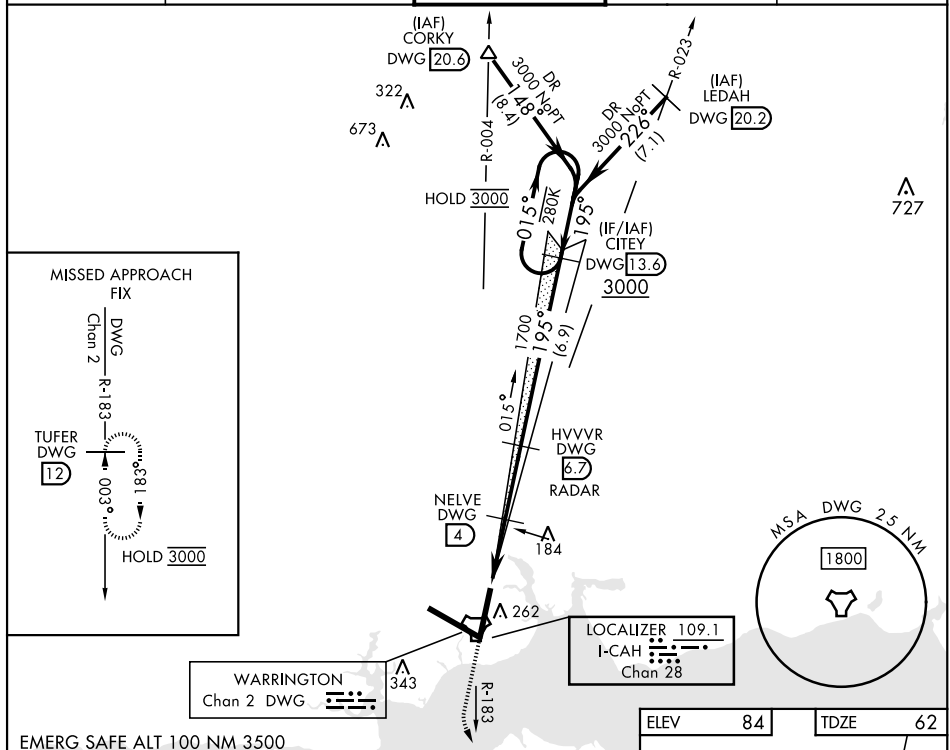
## ILS or LOC Y RWY 20

LOC/DME I-CAH <b>109.1</b> Chan <b>28</b>	APCH CRS <b>195°</b>	Rwy Idg <b>10,012</b> TDZE <b>62</b> Arpt Elev <b>84</b>
-------------------------------------------------	-------------------------	----------------------------------------------------------------

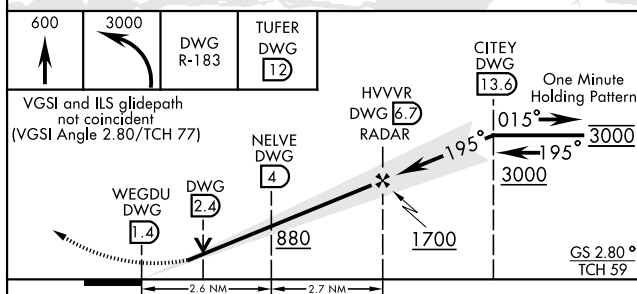
[USAF]

EGLIN AFB DESTIN FORT WALTON BEACH (KVPS)

DME required		ALSF-1 		MISSED APPROACH: Climb to 600, then climbing left turn to 3000 on DWG TACAN R-183 to TUFER/12 DME and hold.	
* When ALS inop increase RVR to 40, vis to ¾ mile. ** When ALS inop increase RVR to 55, vis to 1 mile.					
APP CON ATIS ★ 134.625 273.5		125.1 281.45 271°- 089° 132.1 360.6 090°- 270°		TOWER 118.2 353.65	
				GND CON 121.8 335.8	
				CLNC DEL 127.7 377.2	



EMERG SAFE ALT 100 NM 3500



CATEGORY	A	B	C	D	E
S-ILS 20 *	262/24		200	(200-½)	
S-LOC 20 **	440/24	378 (400-½)	440/35	378	(400-¾)
C CIRCLING	600-1	516 (600-1)	680-1½ 596 (600-1½)	680-2 596 (600-2)	700-2¼ 616 (700-2¼)

