

TACAN Y RWY 36L

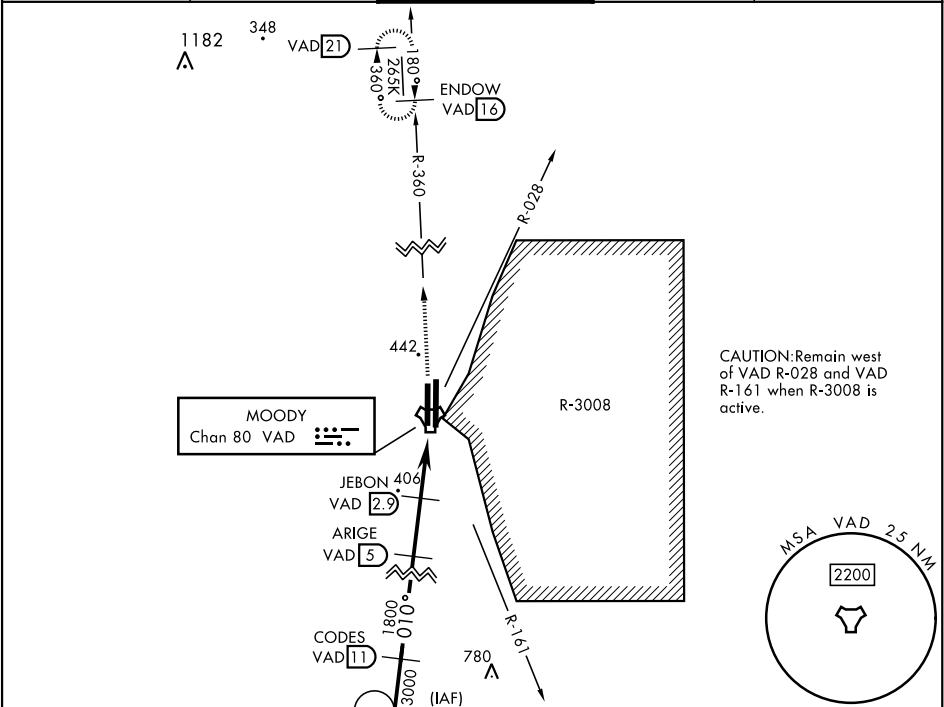
TACAN VAD Chan 80	APCH CRS 010°	Rwy Idg TDZE 225 Arprt Elev 233	[USAF]	MOODY AFB (KVAD)
-----------------------------	-------------------------	---	--------	------------------

▼ * When ALS inop, increase CAT AB RVR to 55 and vis to 1 mile, CAT CDE vis to 1¼ miles.

MALS
(A4)

MISSED APPROACH: Climb to 3000 on VAD TACAN R-360 to ENDOW and hold.

ATIS ★ 273.5	VALDOSTA APP CON 126.6 285.6	TOWER ★ 128.45 (CTAF) 257.625	GND CON 138.95 275.8	CLNC DEL 120.625 296.7
------------------------	--	---	--------------------------------	----------------------------------



ELEV 233

TDZE 225

411

8002 x 150

9300 x 150

0.3% UP

TWR

36L

36R

010°

HIRL all rwys

CODES [11]

3000

010°

ARIGE [5]

1800

JEBON [2.9]

1.4

BEEDE [0.7]

TACAN

1120

2.1 NM

2.2 NM

0.5

3000

VAD R-360

ENDOW VAD [16]

†From JEBON

†2.99°

TCH 50

CATEGORY	A	B	C	D	E
S-36L*	660/40	435 (500-¾)	660/50	435 (500-1)	
CIRCLING	760-1	527 (600-1)	760-1½ 527 (600-1½)	800-2	567 (600-2)

TACAN Y RWY 36L

SE-4, 10 JUL 2025 to 07 AUG 2025

SE-4, 10 JUL 2025 to 07 AUG 2025