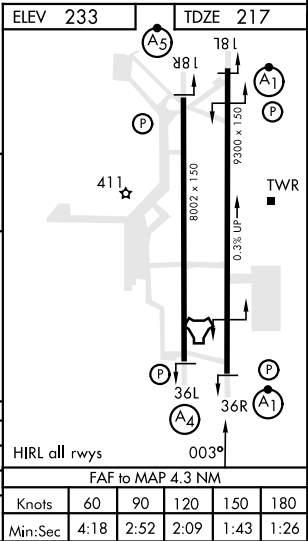
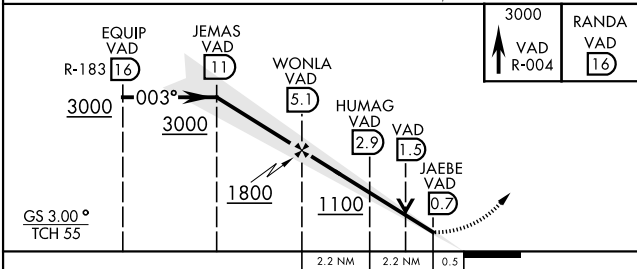
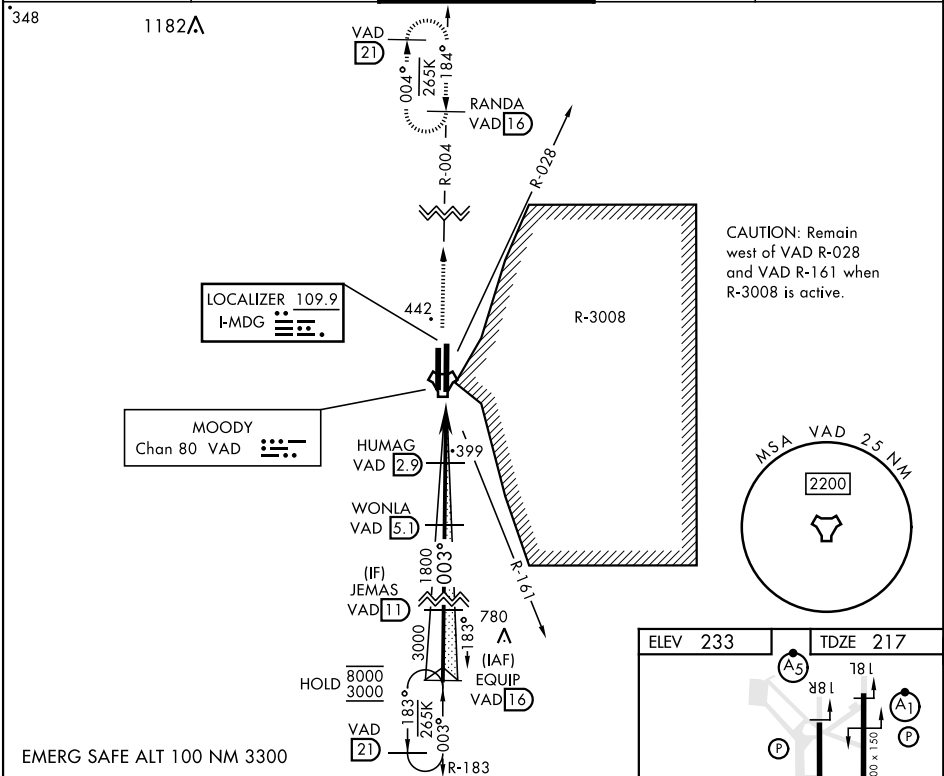


ILS or LOC Y RWY 36R

LOC I-MDG <b>109.9</b>	APCH CRS <b>003°</b>	Rwy Idg TDZE Arpt Elev <b>9300</b> <b>217</b> <b>233</b>	[USAF]	MOODY AFB (KVAD)
---------------------------	-------------------------	---	--------	------------------

RADAR or DME required	ALSF-1 	MISSED APPROACH: Climb to 3000 on VAD TACAN R-004 to RANDA and hold.
* When ALS inop, increase RVR to 40 and vis to 3/4 mile. ** When ALS inop, increase RVR CAT AB to 55 and vis to 1 mile, RVR CAT CDE vis to 1 1/2 miles.		

ATIS ★ <b>273.5</b>	VALDOSTA APP CON <b>126.6 285.6</b>	TOWER ★ <b>128.45</b> (CTAF) <b>257.625</b>	GND CON <b>138.95 275.8</b>	CLNC DEL <b>120.625 296.7</b>
------------------------	--	--	--------------------------------	----------------------------------



ILS or LOC Y RWY 36R

SE-4, 10 JUL 2025 to 07 AUG 2025

SE-4, 10 JUL 2025 to 07 AUG 2025