

HI-ILS or LOC Z RWY 18L

LOC I-VAD 109.3	APCH CRS 183°	Rwy Idg 9300 TDZE 233 Arpt Elev 233	[USAF]	MOODY AFB (KVAD)
---------------------------	-------------------------	----------------------------------------------------------------	--------	------------------

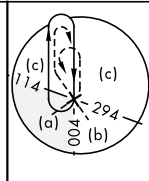
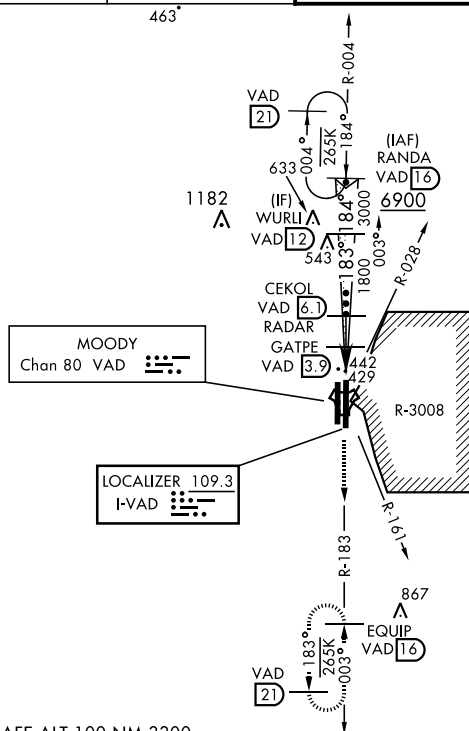
RADAR or DME required

T * When ALS inop, increase RVR to 40 and vis to $\frac{3}{4}$ mile.
** When ALS inop, increase vis to $1\frac{3}{8}$ miles.

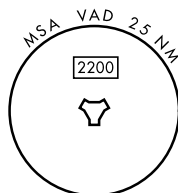
ALSF-1

MISSED APPROACH: Climb to 3000 on VAD TACAN R-183 to EQUIP and hold.

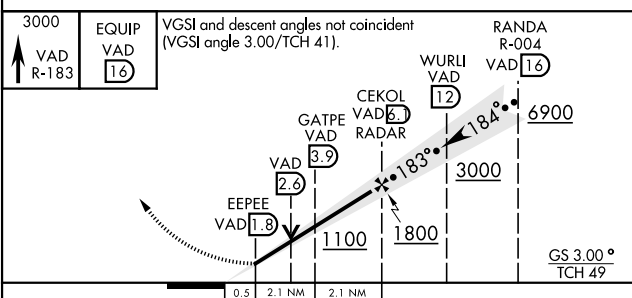
ATIS ★ 273.5	VALDOSTA APP CON 126.6 285.6	TOWER ★ (CTAF) 257.625	GND CON 138.95 275.8	CLNC DEL 120.625 296.7
-----------------	---------------------------------	---------------------------	-------------------------	---------------------------




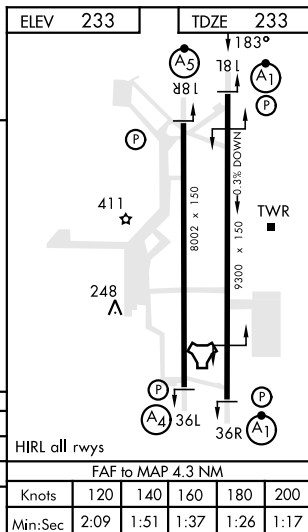
CAUTION: Remain west of VAD R-028 and VAD R-161 when R-3008 is active.



EMERG SAFE ALT 100 NM 3300



CATEGORY	C	D	E
S-ILS 18L*	433/24	200	(200- ½)
S-LOC 18L**	680/45	447	(500- ¾)
 CIRCLING	760-1½ 527 (600-1½)	800-2	567 (600-2)



VALDOSTA, GEORGIA

30°58'N-83°12'W

MOODY AFB (KVAD)

Amdt 6 25JAN24

HI-ILS or LOC Z RWY 18L

SE-4, 10 JUL 2025 to 07 AUG 2025