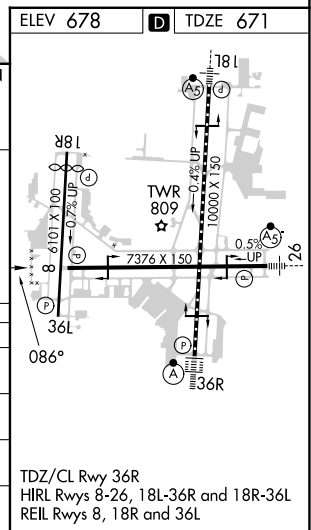
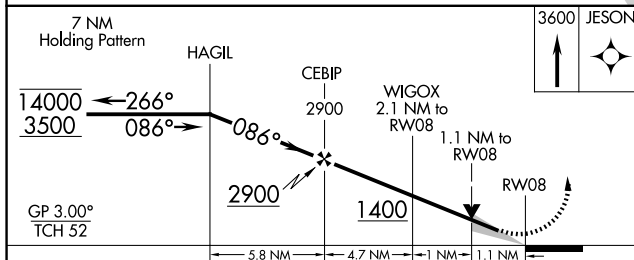
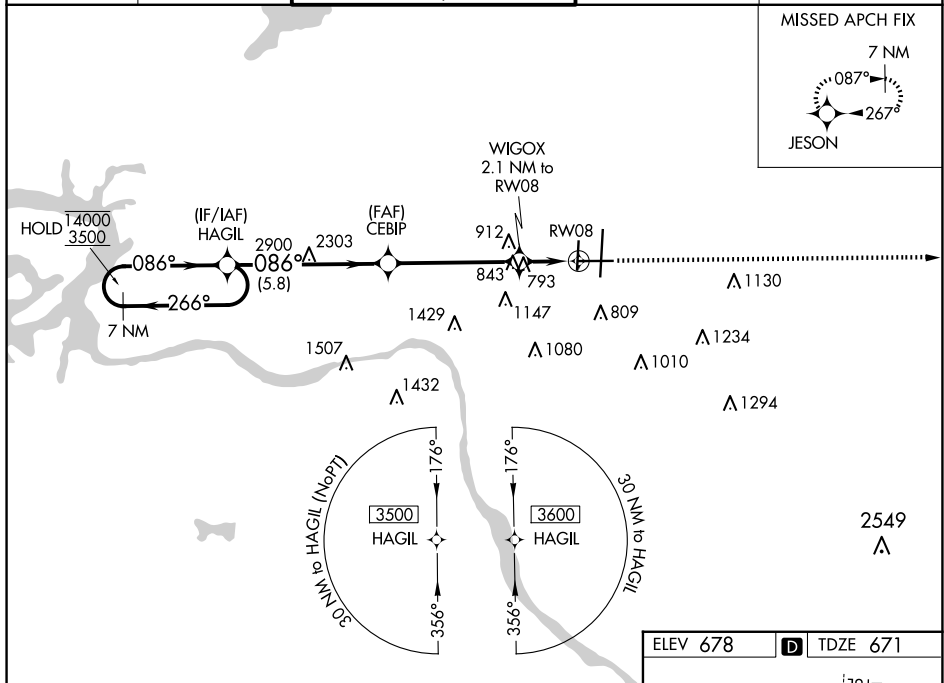



WAAS CH <b>63131</b> <b>W08A</b>	APP CRS <b>086°</b>	Rwy Idg <b>7376</b> TDZE <b>671</b> Apt Elev <b>678</b>
--	------------------------	---

RNAV (GPS) RWY 8  
TULSA INTL (TUL)

RNP APCH - GPS.			<div><div><div></div><div>ASR</div></div><div>Circling NA for Cat E south of Rwy 8-26. For uncompensated Baro-VNAV systems, LNAV/VNAV NA below -12°C or above 54°C.</div></div>		MISSED APPROACH: Climb to 3600 direct JESON and hold, continue climb in hold to 3600.	
<div>D-ATIS</div> <div>124.9 377.2</div>	<div>TULSA APP CON</div> <div>124.0 338.3</div>	<div>TULSA TOWER</div> <div>121.2 310.8 (Rwys 18L-36R, 8-26)</div> <div>118.7 257.8 (Rwy 18R-36L)</div>			<div>GND CON</div> <div>121.9 348.6</div>	<div>CLNC DEL</div> <div>134.05 284.7</div>



CATEGORY		A	B	C	D	E
LPV	DA	871- <sup>3</sup> / <sub>4</sub> 200 (200- <sup>3</sup> / <sub>4</sub> )				
LNAV/ VNAV	DA	985- <sup>7</sup> / <sub>8</sub> 314 (400- <sup>7</sup> / <sub>8</sub> )				
LNAV	MDA	1060-1	389 (400-1)	1060-1 <sup>1</sup> / <sub>8</sub> 389 (400-1 <sup>1</sup> / <sub>8</sub> )		
 CIRCLING		1120-1 442 (500-1)	1160-1 482 (500-1)	1520-2 <sup>1</sup> / <sub>2</sub> 842 (900-2 <sup>1</sup> / <sub>2</sub> )	1520-2 <sup>3</sup> / <sub>4</sub> 842 (900-2 <sup>3</sup> / <sub>4</sub> )	1520-3 842 (900-3)

TULSA, OKLAHOMA  
Amdt 3 17APR25

36°12'N-95°53'W

TULSA INTL (TUL)  
RNAV (GPS) RWY 8

SC-1, 10 JUL 2025 to 07 AUG 2025

SC-1, 10 JUL 2025 to 07 AUG 2025