

WAAS CH 82214 W36A	APP CRS 360°	Rwy Idg 10000 TDZE 650 Apt Elev 678
--	------------------------	--

RNAV (GPS) RWY 36R

TULSA INTL (TUL)

T

ASR

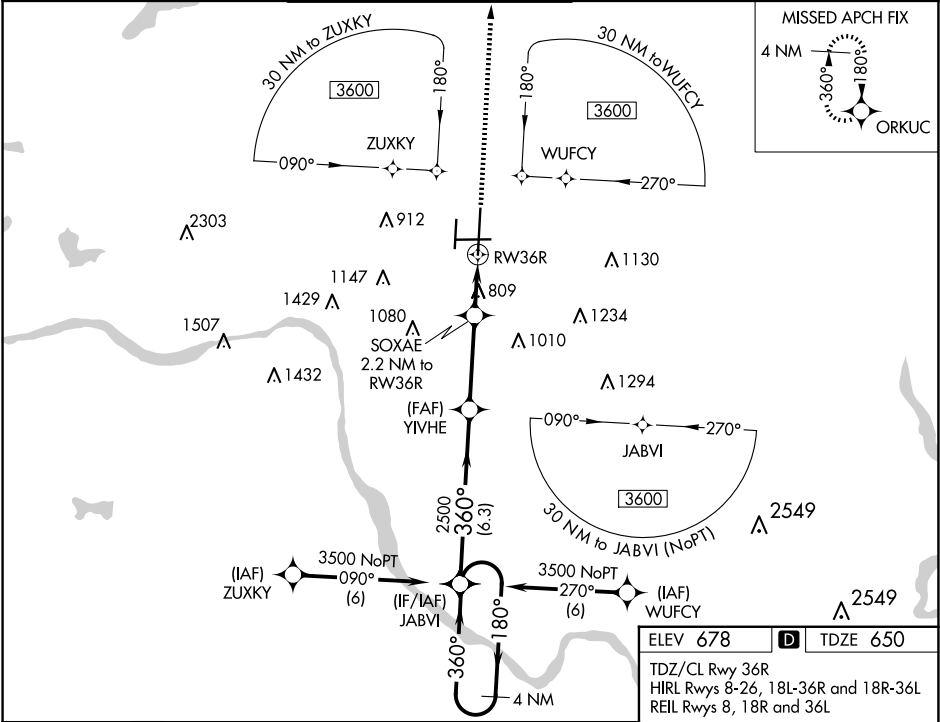
For uncompensated Baro-VNAV systems, LNAV/VNAV NA below -13°C (9°F) or above 54°C (130°F). Circling NA for Cat E south of Rwy 8-26. DME/DME RNP-0.3 NA.
For inop ALSF-2, increase LPV Cat E visibility to RVR 4000, LNAV/VNAV all Cats visibility to 1½ mile, and LNAV Cats C/D/E visibility to 1½ mile.

ALSF-2

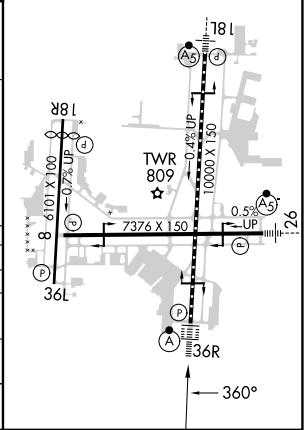
A

MISSED APPROACH:
Climb to 3500 direct ORKUC and hold.

D-ATIS 124.9 377.2	TULSA APP CON 124.0 338.3	TULSA TOWER 121.2 310.8 (Rwys 18L-36R, 8-26) 118.7 257.8 (Rwy 18R-36L)	GND CON 121.9 348.6	CLNC DEL 134.05 284.7
------------------------------	-------------------------------------	--	-------------------------------	---------------------------------



4 NM Holding Pattern JABVI		VGSI and RNAV glidepath not coincident (VGSI Angle 3.00/TCH 57).		3500	ORKUC
GP 3.00° TCH 52		YIVHE 2500		*LNAV only	
3500		SOXAE 2.2 NM to RW36R		*1.3 NM to RW36R	
180°		*1400		RW36R	
360°		6.3 NM		0.9 NM	
360°		3.4 NM		1.3 NM	
CATEGORY	A	B	C	D	E
LPV DA	850/18		200 (200-½)		
LNAV/VNAV DA	1145-1¼		495 (500-1¼)		
LNAV MDA	1120/24	470 (500-½)	1120/50		470 (500-1)
CIRCLING	1120-1 442 (500-1)	1160-1 482 (500-1)	1520-2½ 842 (900-2½)	1520-2¾ 842 (900-2¾)	1520-3 842 (900-3)



SC-1, 10 JUL 2025 to 07 AUG 2025

SC-1, 10 JUL 2025 to 07 AUG 2025