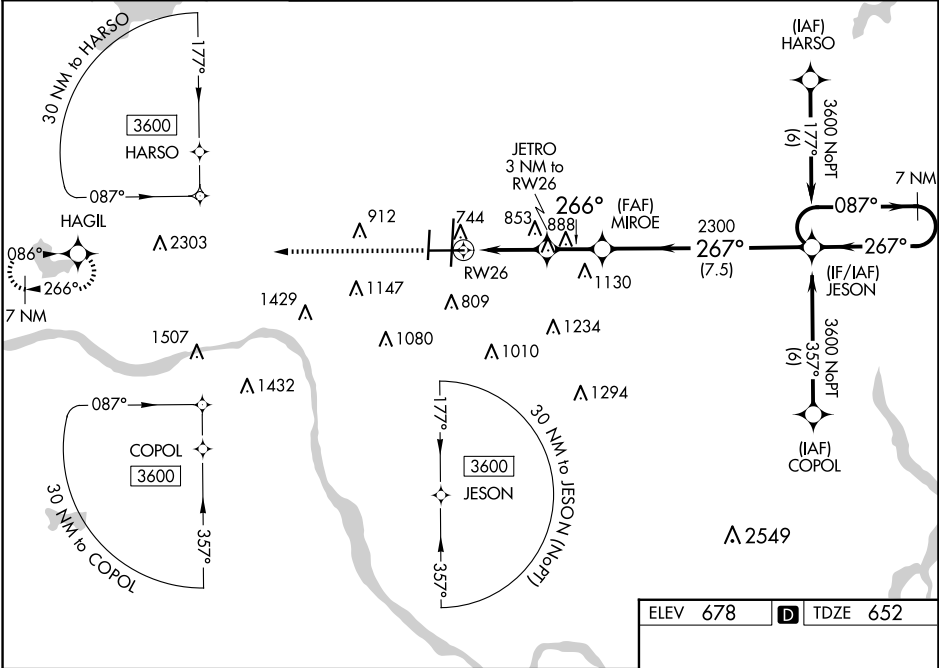


WAAS CH <b>93814</b> <b>W26A</b>	APP CRS <b>266°</b>	Rwy Idg TDZE <b>652</b> Apt Elev <b>678</b>
--	------------------------	---

RNAV (GPS) RWY 26  
TULSA INTL (TUL)

ASR Inop table does not apply to LPV DA. For uncompensated Baro-VNAV systems, LNAV/VNAV NA below -13°C (9°F) or above 54°C (130°F). For inop MALSR, increase LNAV/VNAV DA Cat E visibility to 1½ mile, LNAV MDA Cats A/B visibility to 1 mile and Cat E to 1½ mile. Circling NA for Cat E south of Rwy 8-26. DME/DME RNP-0.3 NA.	MALSR 	MISSED APPROACH: Climb to 3500 direct HAGIL and hold.
---	-----------	---

D-ATIS <b>124.9 377.2</b>	TULSA APP CON <b>124.0 338.3</b>	TULSA TOWER <b>121.2 310.8</b> (Rwys 18L-36R, 8-26) <b>118.7 257.8</b> (Rwy 18R-36L)	GND CON <b>121.9 348.6</b>	CLNC DEL <b>134.05 284.7</b>
------------------------------	-------------------------------------	--	-------------------------------	---------------------------------



<div><div>3500 ↑ HAGIL</div><div>*LNAV only</div></div>		<div>JETRO 3 NM to RW26</div> <div>*1.5 NM to RW26</div>		<div>MIROE 2300</div>	<div>JESON 7 NM Holding Pattern</div>		
<div><div>RW26</div><div>1.5</div><div>1.5</div><div>2 NM</div><div>7.5 NM</div></div>		<div>1640*</div>		<div>266°</div> <div>2300</div>	<div>267°</div> <div>087° →</div> <div>← 267°</div> <div>3600</div>	<div>GP 3.00° TCH 57</div>	
CATEGORY		A	B	C	D	E	
LPV	DA	852-¾ 200 (200-¾)					
LNAV/ VNAV	DA	1089-1 437 (500-1)					
LNAV MDA	1160-¾ 508 (500-¾)			1160-1 508 (500-1)			
<b>C</b> CIRCLING	1160-1 482 (500-1)			1520-2½ 842 (900-2½)	1520-2¾ 842 (900-2¾)	1520-3 842 (900-3)	

