

TULSA, OKLAHOMA

AL-432 (FAA)

24305

WAAS CH 69614 W18B	APP CRS 180°	Rwy Idg 5141 TDZE 668 Apt Elev 678
--	------------------------	---

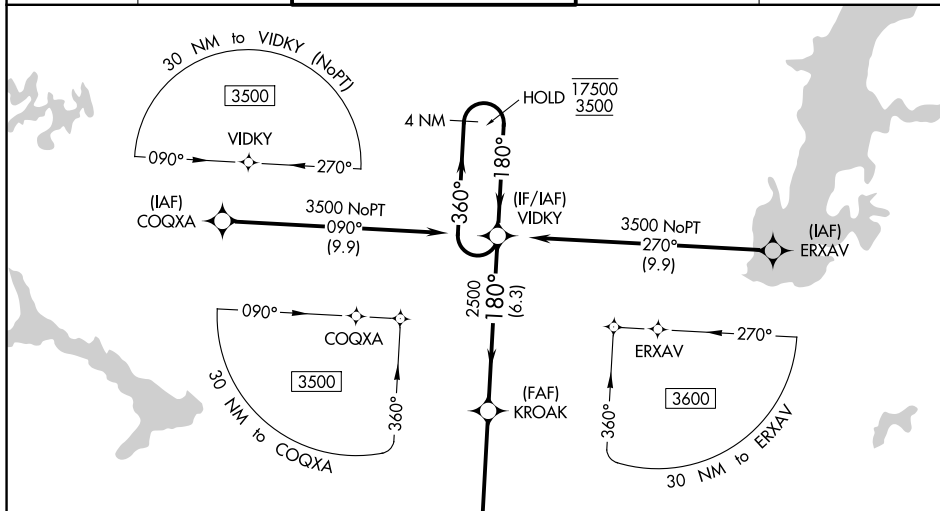
RNAV (GPS) RWY 18R
TULSA INTL (TUL)

RNP APCH - GPS.

T Circling NA for Cat E south of Rwy 8-26. Use of FD or AP required during simultaneous operations.
A For uncompensated Baro-VNAV systems, LNAV/VNAV NA below -8°C or above 54°C.
ASR Simultaneous approach authorized. LNAV procedure NA during simultaneous operations.

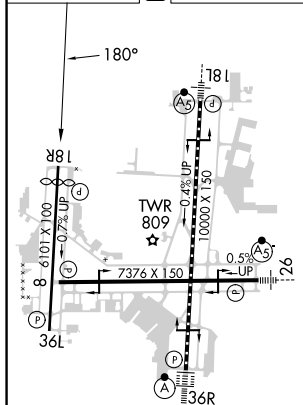
MISSED APPROACH:
Climb to 3500 direct
SUSNE and hold.

D-ATIS 124.9 377.2	TULSA APP CON 124.0 338.3	TULSA TOWER 121.2 310.8 (Rwys 18L-36R, 8-26) 118.7 257.8 (Rwy 18R-36L)	GND CON 121.9 348.6	CLNC DEL 134.05 284.7
------------------------------	-------------------------------------	--	-------------------------------	---------------------------------



MISSED APCH FIX

ELEV 678	D	TDZE 668
----------	----------	----------



TDZ/CL Rwy 36R
HIRL Rwys 8-26, 18L-36R and 18R-36L
REIL Rwys 8, 18R and 36L

The diagram illustrates the KROAK VORTAC station and its relationship to various navigational features:

- KROAK VORTAC**: Located at the center of the diagram.
- RWY 18R**: Runway located to the left of KROAK, separated by 1.7 NM.
- SUSNE**: A navigation aid located to the upper left of KROAK, separated by 1.7 NM.
- VIDKY**: A navigation aid located to the right of KROAK, separated by 6.3 NM.
- Holding Pattern**: A 4 NM holding pattern centered on VIDKY, with inbound and outbound legs at 360° and 180° respectively.
- Distances from KROAK**:
 - 1.7 NM to RWY 18R
 - 4.5 NM to SUSNE
 - 6.3 NM to VIDKY
- GP 2.75° TCH 42**: Ground Proximity Warning system information.

TULSA, OKLAHOMA
Amdt 2A 05OCT23

36°12'N-95°53'W

TULSA INTL (TUL)

RNAV (GPS) RWY 18R

SC-1, 10 JUL 2025 to 07 AUG 2025