


TULSA, OKLAHOMA

AL-432 (FAA)

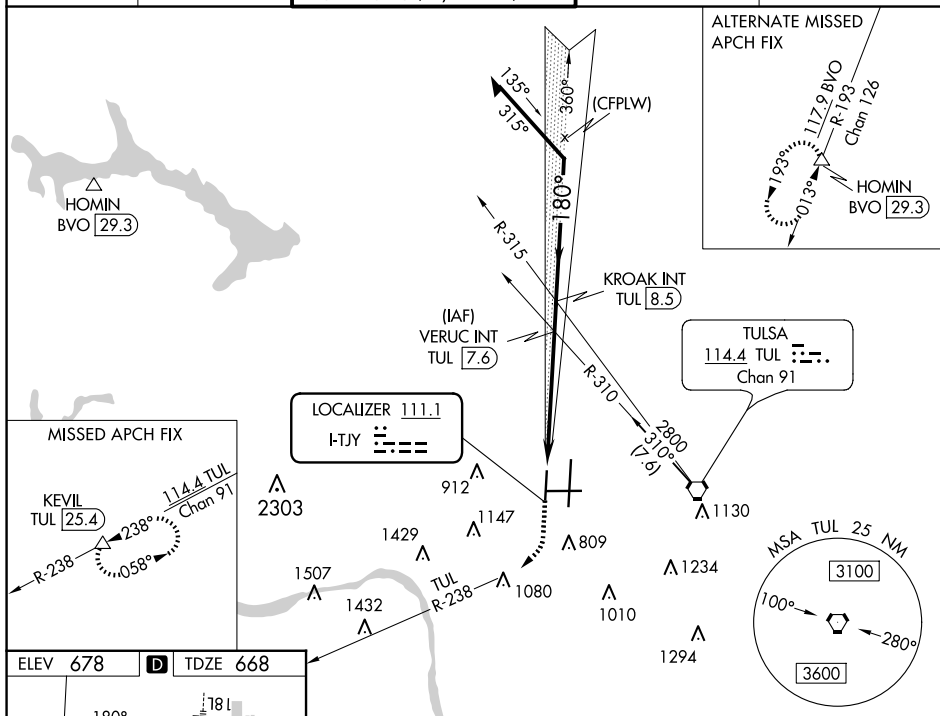
24305

LOC I-TJY <b><u>111.1</u></b>	APP CRS <b>180°</b>	Rwy Idg <b>5141</b> TDZE <b>668</b> Apt Elev <b>678</b>
----------------------------------	------------------------	---

ILS or LOC RWY 18R  
TULSA INTL (TUL)

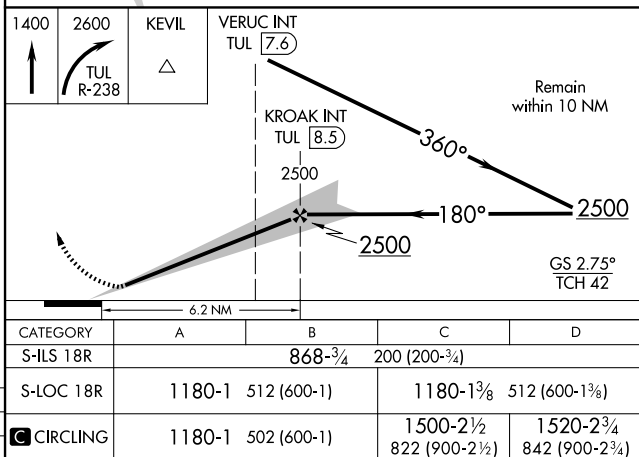
 ASR	Simultaneous approach authorized.	MISSED APPROACH: Climb to 1400 then climbing right turn to 2600 on TUL VORTAC R-238 to KEVIL INT/TUL 25.4 DME and hold.
--	-----------------------------------	---

D-ATIS <b>124.9 377.2</b>	TULSA APP CON <b>124.0 338.3</b>	TULSA TOWER <b>121.2 310.8</b> (Rwy 18L-36R, 8-26) <b>118.7 257.8</b> (Rwy 18R-36L)	GND CON <b>121.9 348.6</b>	CLNC DEL <b>134.05 284.7</b>
------------------------------	-------------------------------------	---	-------------------------------	---------------------------------



TDZ/CL Rwy 36R  
HIRL Rwys 8-26, 18L-36R and 18R-36L  
REIL Rwys 8, 18R and 36L

FAF to MAP 6.2 NM					
Knots	60	90	120	150	180
Min:Sec	6:12	4:08	3:06	2:29	2:04



TULSA, OKLAHOMA  
Amdt 9 05OCT23

36°12'N-95°53'W

TULSA INTL (TUL)  
ILS or LOC RWY 18R

SC-1, 10 JUL 2025 to 07 AUG 2025