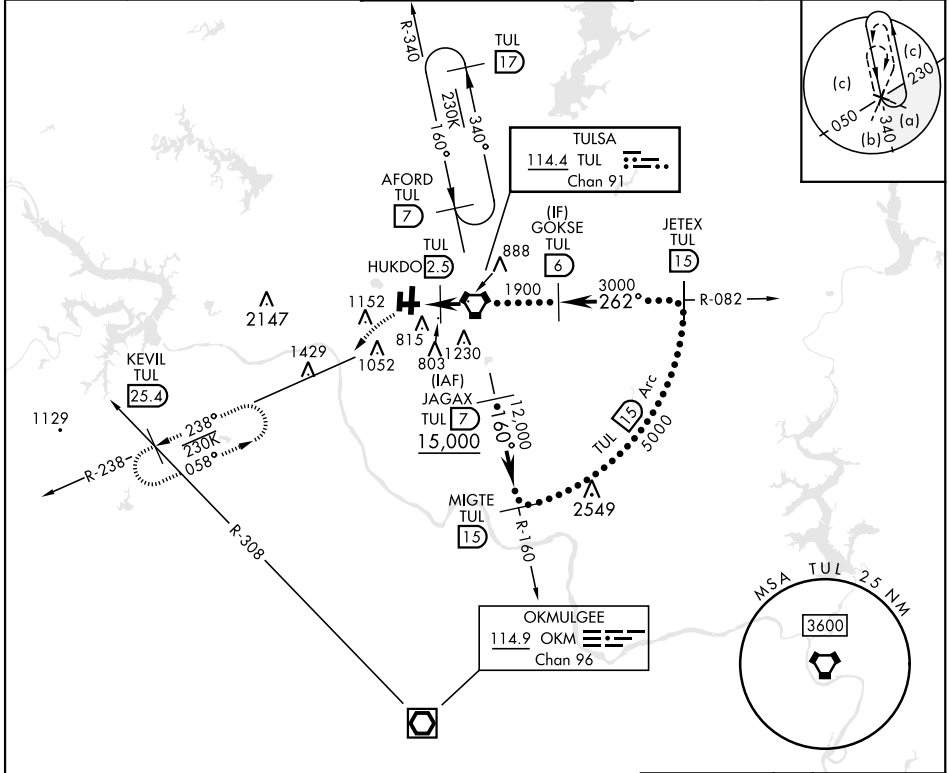


TULSA, OKLAHOMA

25107

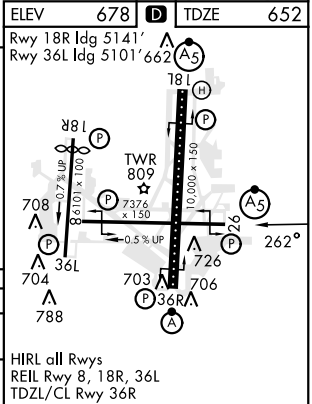
# HI-VOR Z or TACAN Z RWY 26

VORTAC TUL <b>114.4</b> Chan <b>91</b>	APCH CRS <b>262°</b>	Rwy Idg TDZE <b>652</b> Arpt Elev <b>678</b>	[USAF]	TULSA INTL (KTUL)
DME required			MALSR <b>A5</b>	MISSED APPROACH: Climbing left turn to 2600 on heading 220° and TUL VORTAC R-238 to KEVIL/TUL 25.4 DME and hold.
*When ALS inop, increase CAT CDE vis to 1¼ miles. **CAT E circling not authorized S of Rwy 8-26.				
ATIS <b>124.9 377.2</b>	APP CON <b>124.0 338.3</b> 175° - 354° <b>119.1 351.8</b> 355° - 174°	TOWER <b>121.2 310.8</b> Rwy 18L-36R, 8-26 <b>118.7 257.8</b> Rwy 18R-36L	GND CON <b>121.9 348.6</b>	CLNC DEL <b>134.05 284.7</b> ASR



EMERG SAFE ALT 100 NM 4500

<div>2600 hdg 220°</div>		<div>KEVIL TUL 25.4</div>		<div>GOKSE TUL 6</div>	
<div>TUL 3 4.2</div>		<div>HUKDO TUL 2.5</div>		<div>TUL VORTAC</div>	
<div>1200</div>		<div>1900</div>		<div>3000</div>	
<div>1.7 NM</div>		<div>2.5 NM</div>		<div>262°</div>	
<div>2.87° TCH 57</div>					
CATEGORY	C	D	E		
S-26*	1080-¾		428	(500-¾)	
CIRCLING**	1520-2½ 842 (900-2½)		1520-2¾ 842 (900-2¾)		1520-3 842 (900-3)



TULSA, OKLAHOMA

36°12'N-95°53'W

TULSA INTL (KTUL)

Amtd 3B 30NOV23

# HI-VOR Z or TACAN Z RWY 26