

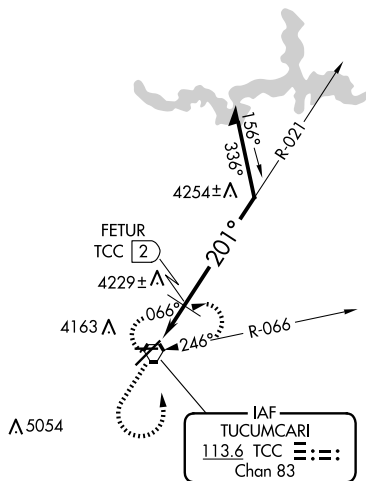
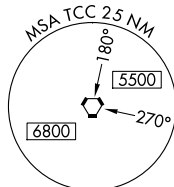
VORTAC TCC 113.6 Chan 83	APP CRS 201°	Rwy Idg 7104 TDZE 4047 Apt Elev 4065
--	------------------------	---

VOR RWY 21
TUCUMCARI MUNI (TCC)

T If local altimeter setting not received, procedure NA. Circling NA for Cat D north of Rwy 8 and northwest of Rwy 21.

MISSED APPROACH: Climb to 5100 then climbing left turn to 6100 direct TCC VORTAC and hold.

ASOS 119.275	ALBUQUERQUE CENTER 126.85 285.6	UNICOM 122.95 (CTAF) 0
------------------------	---	----------------------------------



ELEV 4065

TDZE 4047

201° to VORTAC

8

← 0.6% UP

4600 X 60

26

7104 X 100

3

☆

✈

MIRA Rwy 3-21 and 8-26

A 5229

Diagram illustrating the FETUR (Future) TCC (Tactical Channel Center) and TCC (Tactical Channel Center) for A 5229.

The diagram shows the TCC (Tactical Channel Center) at 6100 and the FETUR (Future) TCC at 4600. The FETUR TCC is located 1.6 NM from the TCC. The bearing from the TCC to the FETUR TCC is 027°, and the bearing from the FETUR TCC to the TCC is 201°. The channel width is 3.03° TCH 52. A note indicates to "Remain within 10 NM".

CATEGORY	A	B	C	D
S-21	4600-1	553 (600-1)	4600-1½ 553 (600-1½)	4600-1¾ 553 (600-1¾)
C CIRCLING	4600-1	535 (600-1)	4600-1½ 535 (600-1½)	4640-2 575 (600-2)

FETUR FIX MINIMUMS

S-21	4480-1	433 (500-1)	4480-1¼ 433 (500-1¼)	4480-1½ 433 (500-1½)
C CIRCLING	4580-1	515 (600-1)	4580-1½ 515 (600-1½)	4640-2 575 (600-2)