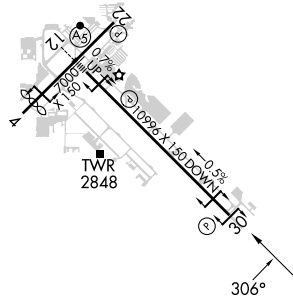


RNAV (RNP) Y RWY 30  
TUCSON INTL (TUS)

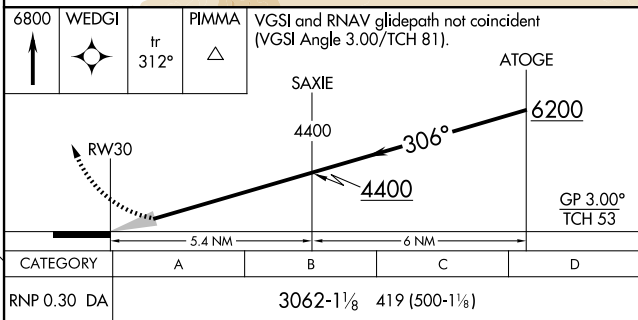
**T** For uncompensated Baro-VNAV systems, procedure NA below -2°C or above 54°C.

**MISSED APPROACH:** Climb to 6800 direct WEDGI and on track 312° to PIMMA and hold.

CLNC DEL  
**126.65 326.2**



HIRL Rwy 12-30  
MIRL Rwy 4-22  
REIL Rwy 22 and 30



# AUTHORIZATION REQUIRED