

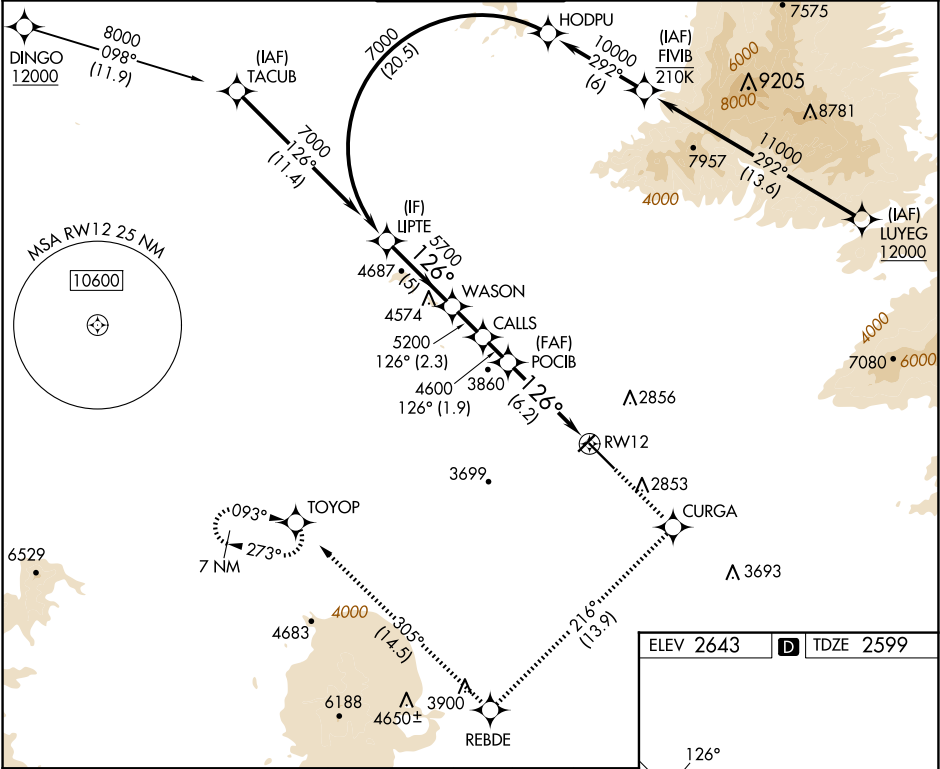
APP CRS	Rwy Idg	10996
126°	TDZE	2599
	Apt Elev	2643

RNAV (RNP) Y RWY 12

TUCSON INTL (TUS)

RNP AR APCH - GPS.	MALSR	MISSED APPROACH: Climb to 9000 direct CURGA and climbing right turn on track 216° to REBDE and climbing right turn on track 305° to TOYOP and hold, continue climb-in-hold to 9000.
▼ For uncompensated Baro-VNAV systems, procedure NA below -2°C or above 54°C. For inop ALS, increase RNP 0.30 all Cats visibility to RVR 4500.		

ATIS	TUCSON APP CON	TUCSON TOWER	GND CON	CINC DEL
123.8 279.65	119.4 318.1	118.3 257.8	120.025 348.6	126.65 326.2



LIPTTE	WASON	CALLS	POCIB	RW12
7000	5700	5200	4600	
GP 3.00°				
TCH 55				
5 NM	2.3 NM	1.9 NM	6.2 NM	
CATEGORY	A	B	C	D
RNP 0.30 DA	2905/24	306 (300-½)		
AUTHORIZATION REQUIRED				

