

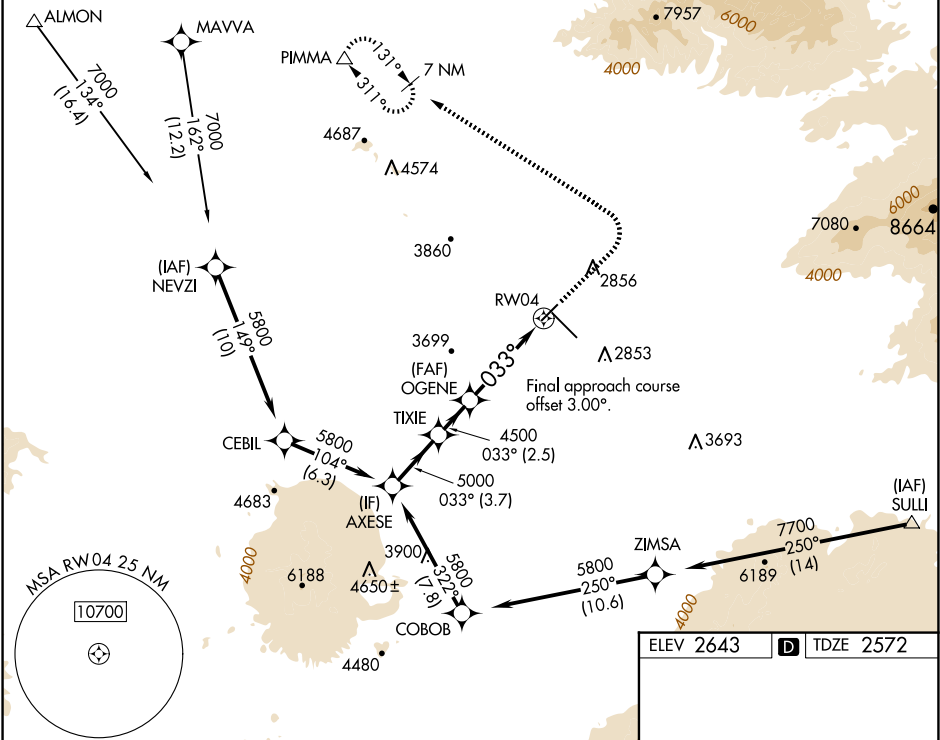
APP CRS	Rwy Idg	6150
033°	TDZE	2572
	Apt Elev	2643

RNAV (GPS) RWY 4

TUCSON INTL (TUS)

RNP APCH - GPS.	MISSED APPROACH: Climb to 3500 then climbing left turn to 6500 direct PIMMA and hold.
<div><div></div><div>Rwy 4 helicopter visibility reduction below ¾ SM NA. For uncompensated Baro-VNAV systems, LNAV/VNAV NA below -2°C or above 54°C.</div></div>	

ATIS 123.8 279.65	TUCSON APP CON 119.4 318.1	TUCSON TOWER 118.3 257.8	GND CON 120.025 348.6	CLNC DEL 126.65 326.2
----------------------	-------------------------------	-----------------------------	--------------------------	--------------------------



	AXESE	TIXIE	OGENE		3500	6500	PIMMA
	5800		4500				△
	033°		4500		1.8 NM to RW04		
GP 3.00° TCH 50							
	3.7 NM	2.5 NM	4.1 NM	1.8 NM			
CATEGORY	A	B	C	D			
LNAV/VNAV	DA	3284-2½	712 (700-2½)				
LNAV MDA	3180-1	608 (600-1)	3180-1¾	608 (600-1¾)			
CIRCLING	3180-1 537 (600-1)	3220-1 577 (600-1)	3220-1¾ 577 (600-1¾)	3660-3 1017 (1100-3)			

