

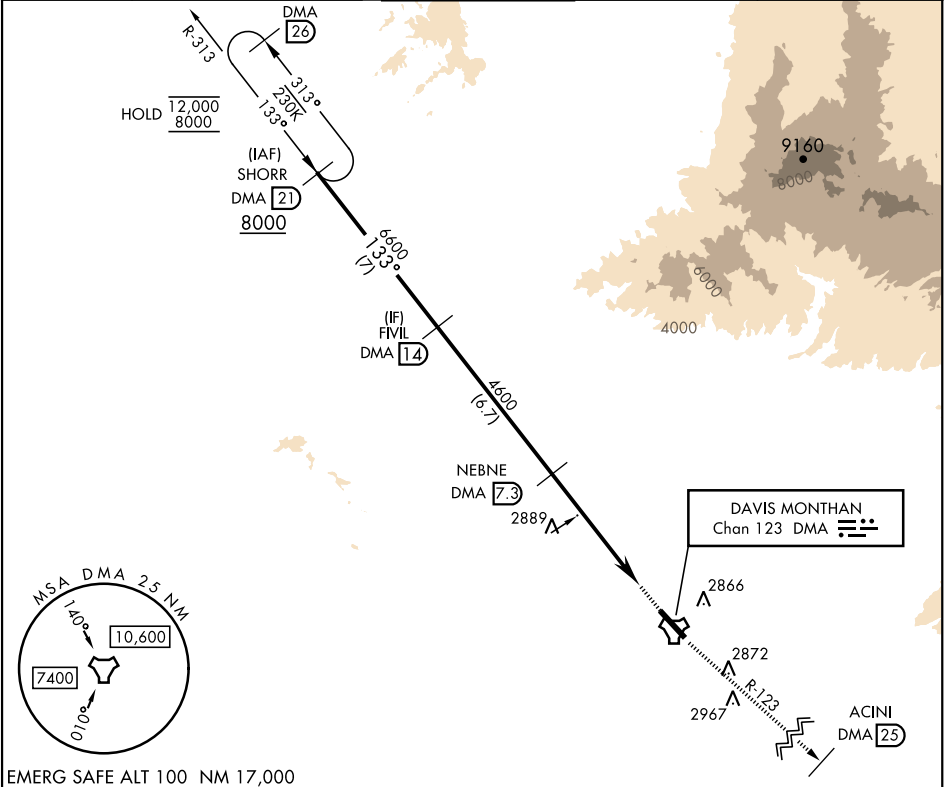
TACAN Y RWY 13

TACAN DMA Chan 123	APCH CRS 133°	Rwy Idg 13,645 TDZE 2615 Arpt Elev 2704
------------------------------	-------------------------	--

[USAF]

DAVIS-MONTHAN AFB (KDMA)

RNAV or RADAR required.		MISSED APPROACH: Climb to 8000 intercept DMA TACAN R-123 to ACINI. Expect RADAR vectors.		
*Circling not authorized SW of Rwy 13-31.				
ATIS★ 132.3 270.1	TUCSON APP CON 066°-274° 119.4 318.1 275°-065° 125.1 269.55	TOWER 118.85 253.5	GND CON 121.8 275.8	CLNC DEL 121.8 275.8



EMERG SAFE ALT 100 NM 17,000

<div><div>SHORR DMA 21</div><div>8000</div></div> <div><div>FIVIL DMA 14</div><div>6600</div></div> <div><div>NEBNE DMA 7.3</div><div>4600</div></div> <div><div>DMA 3.1</div><div>ESALE DMA 2</div></div> <div><div>DMA TACAN</div></div> <div><div>8000</div><div>DMA R-123</div></div> <div><div>ACINI DMA 25</div></div> <div><div>ELEV 2704</div></div> <div><div>TDZE 2615</div></div>					
<div><div>133°</div><div>3.17°</div><div>TCH 58</div><div>5.3 NM</div><div>0.5 NM</div></div>					
CATEGORY	A	B	C	D	E
S-13	3160/55 545 (500-1)		3160-1½ 545 (500-1½)		
CIRCLING*	3200-1 496 (500-1)	3220-1 516 (600-1)	3280-1½ 576 (600-1½)	3420-2¼ 716 (800-2¼)	3460-2¾ 756 (800-2¾)
<div><div>HIRL Rwy 13-31</div><div>REIL Rwy 13</div></div>					

TACAN Y RWY 13

SW-4, 10 JUL 2025 to 07 AUG 2025

SW-4, 10 JUL 2025 to 07 AUG 2025