

TUCSON, ARIZONA

WAAS CH 71267 W31A	APCH CRS 308°	Rwy Idg TDZE Arpt Elev	13,645 2704 2704
--------------------------	------------------	------------------------------	------------------------

- (USAF)

DAVIS MONTHAN AFB (KDMA)

RNAV (GPS) RWY 31

RNP APCH

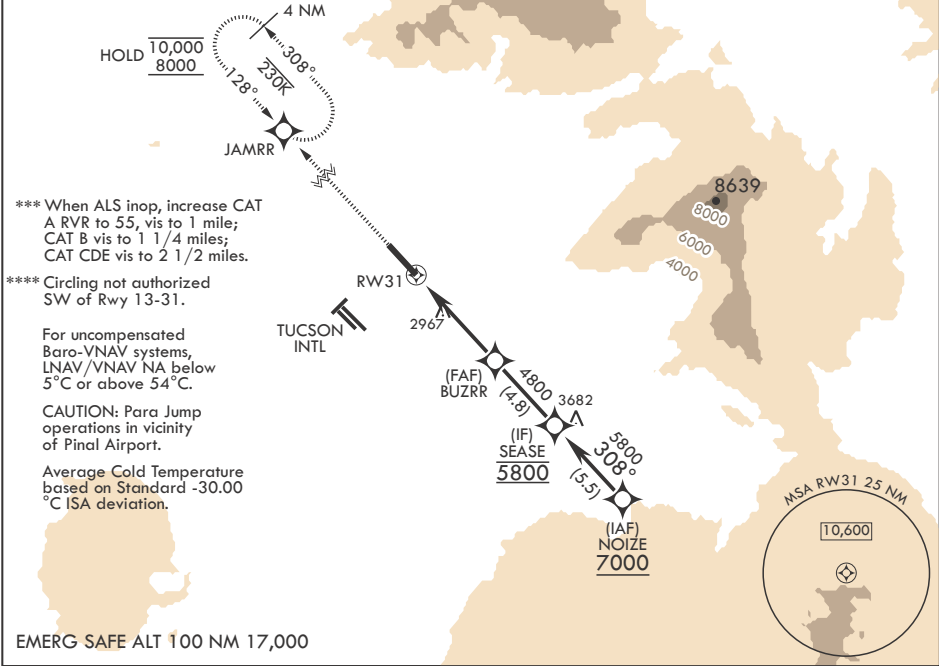
▼ * When ALS inop, increase vis to 1 3/8 miles.
** When ALS inop, increase RVR to 45, vis to 7/8 mile.

ALS-F-1



MISSED APPROACH: Climb to 8000 direct JAMRR and hold, continue climb-in-hold to 8000.

ATIS★ 132.3 270.1	TUCSON APP CON/DEP CON 119.4 269.55	TOWER 118.85 253.5	GND CON 121.8 275.8	CLNC DEL 121.8 275.8
----------------------	--	-----------------------	------------------------	-------------------------



8000 JAMRR

NOIZE

SEASE 308° 7000

5800

BUZRR

4800

GP 3.00° TCH 59

RW31

2.2 NM to RW31

6.4 NM

CATEGORY	A	B	C	D	E
LPV DA*	3168/50		464	(500-1)	
LNAV/VNAV DA**	2966/24 262 (300-½)	2977/24 273 (300-½)	2985/24 281 (300-½)	2996/24 292 (300-½)	
LNAV MDA***	3480/24 776 (800-½)	3480/40 776 (800-¾)	3480-1¾ 776 (800-1¾)		
CIRCLING****	3480-1 776 (800-1)	3480-1¼ 776 (800-1¼)	3480-2½ 776 (800-2½)		3480-2¾ 776 (800-2¾)

ELEV 2704

TDZE 2704

308°

2815

2872

13.645 x 200

0.6% DOWN

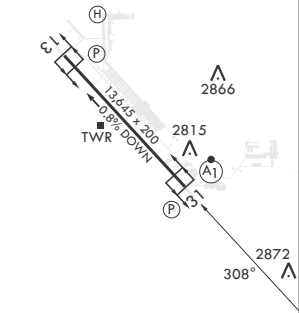
TWR

2866

2872

308°

HIRL all Rwy's
REIL Rwy 13



TUCSON, ARIZONA

Orig 28NOV24

32°10'N - 110°53'W

DAVIS MONTHAN AFB (KDMA)

RNAV (GPS) RWY 31

SW-4, 10 JUL 2025 to 07 AUG 2025

SW-4, 10 JUL 2025 to 07 AUG 2025