

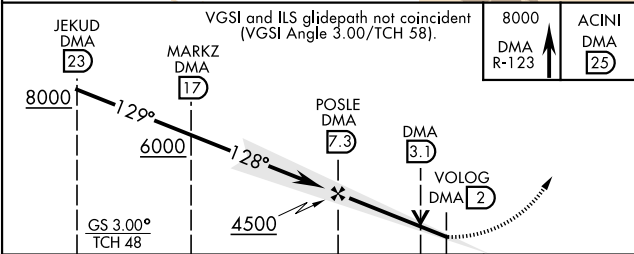
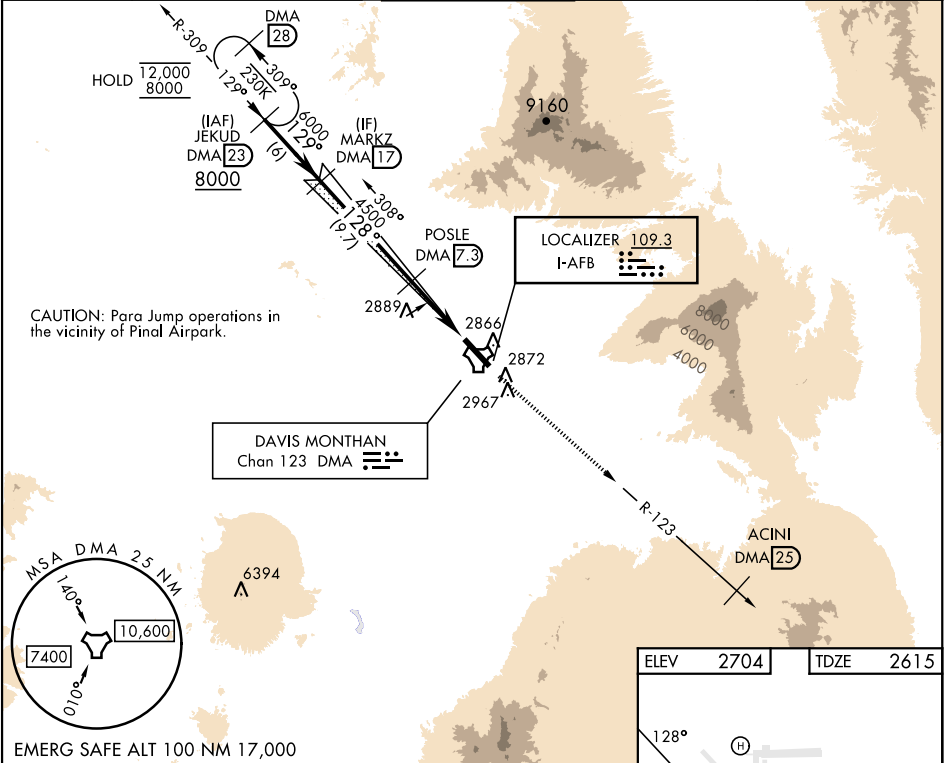
ILS or LOC Y RWY 13

LOC I-AFB 109.3	APCH CRS 128°	Rwy Idg 13,645 TDZE 2615 Arpt Elev 2704
---------------------------	-------------------------	--------------------------------------------------------------------

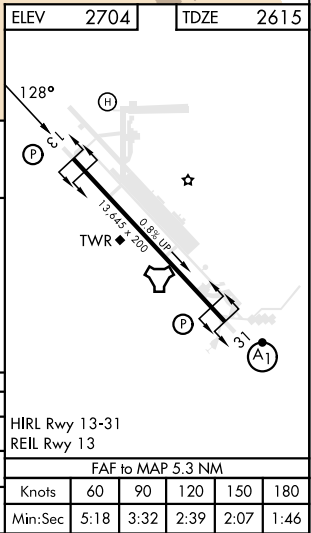
[USAF]

DAVIS-MONTHAN AFB (KDMA)

DME or RADAR required		MISSED APPROACH: Climbing to 8000 intercept DMA TACAN R-123 to ACINI. Expect RADAR vectors.		
* Circling not authorized SW of Rwy 13-31.				
ATIS★ 132.3 270.1	TUCSON APP CON 066°-274° 119.4 318.1 275°-065° 125.1 269.55	TOWER 118.85 253.5	GND CON 121.8 275.8	CLNC DEL 121.8 275.8



CATEGORY	A	B	C	D	E
S-ILS 13	2815/40 200 (200-¾)				
S-LOC 13	3160/55 545 (500-1)	3160-1½ 545 (500-1½)			
CIRCLING*	3200-1 496 (500-1)	3220-1 516 (600-1)	3280-1½ 576 (600-1½)	3420-2¼ 716 (800-2¼)	3460-2¾ 756 (800-2¾)



ILS or LOC Y RWY 13

SW-4, 10 JUL 2025 to 07 AUG 2025

SW-4, 10 JUL 2025 to 07 AUG 2025