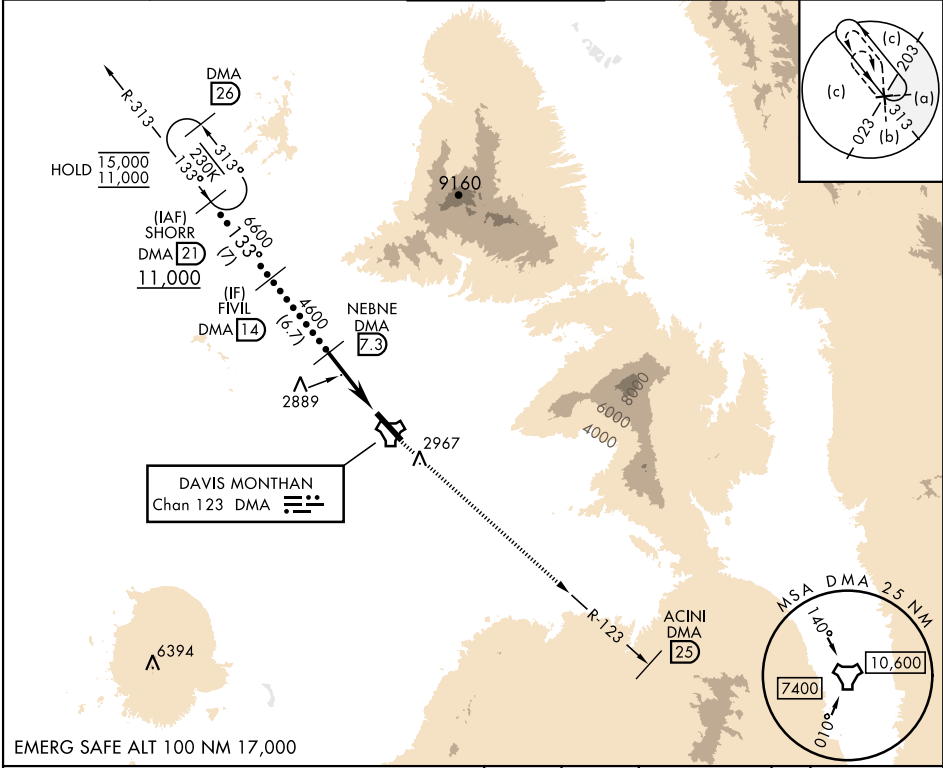


TACAN DMA Chan 123	APCH CRS 133°	Rwy Idg 13,645 TDZE 2615 Arprt Elev 2704	[USAF]	DAVIS-MONTHAN AFB (KDMA)
RNAV or RADAR required.			MISSED APPROACH: Climbing to 8000 intercept DMA TACAN R-123 to ACINI. Expect RADAR vectors.	
▼ *Circling not authorized SW of Rwy 13-31.				

ATIS★ 132.3 270.1	TUCSON APP CON 066°-274° 119.4 318.1 275°-065° 125.1 269.55	TOWER 118.85 253.5	GND CON 121.8 275.8	CLNC DEL 121.8 275.8
-----------------------------	---	------------------------------	-------------------------------	--------------------------------



<div>SHORR DMA 21</div> <div>11,000</div>			<div>8000</div> <div>DMA R-123</div>		<div>ACINI DMA 25</div>	<div>ELEV 2704</div>	<div>TDZE 2615</div>
<div>FIVIL DMA 14</div> <div>6600</div>			<div>NEBNE DMA 7.3</div> <div>4600</div>		<div>DMA 3.1</div> <div>ESALE DMA 2</div>	<div>DMA TACAN</div>	
			<div>3.17°</div> <div>TCH 58</div>				
			<div>5.3 NM</div>		<div>0.5 NM</div>		
CATEGORY	C	D	E				
S-13	3160-1½		545	(500-1½)			
CIRCLING*	3280-1½ 576 (600-1½)		3420-2¼ 716 (800-2¼)	3460-2¾ 756 (800-2¾)			
HIRL Rwy 13-31							
REIL Rwy 13							

133°

5.1

13.4-5

200

0.8% UP

3.1

A1

TWR

☆