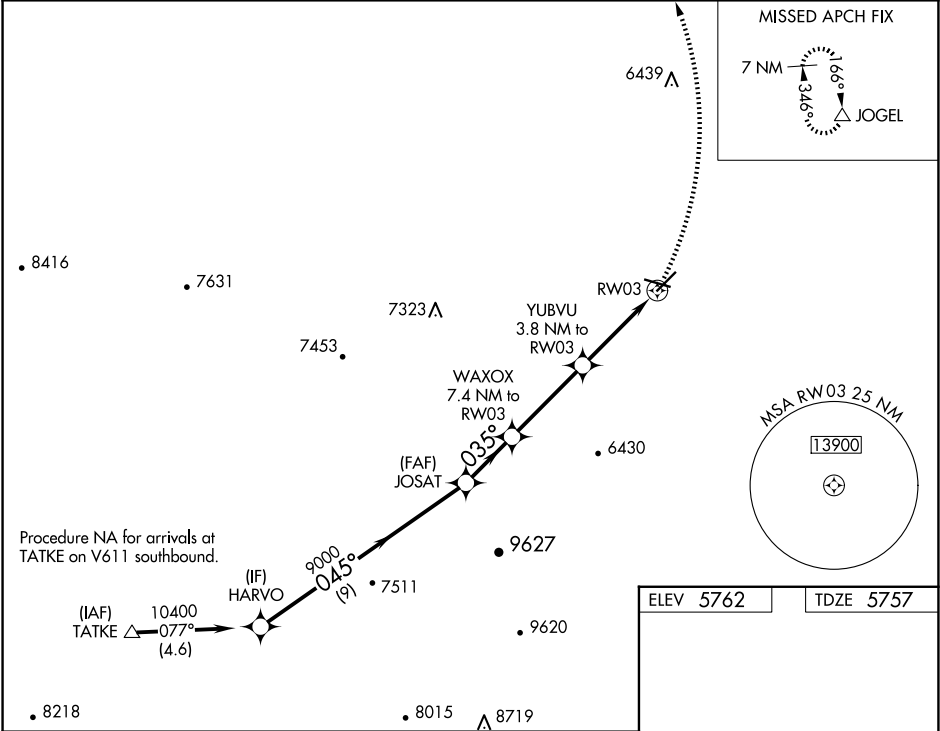


APP CRS	Rwy Idg	5500
035°	TDZE	5757
	Apt Elev	5762

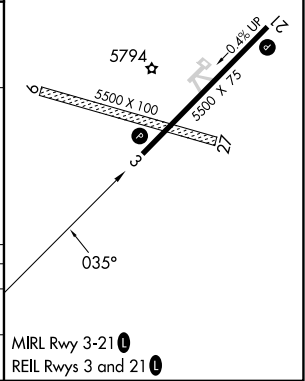
RNAV (GPS) RWY 3  
PERRY STOKES (TAD)

RNP APCH.	<p>⚠ Circling NA to Rwy 9 and 27. VDP NA when using Pueblo Meml altimeter setting. When local altimeter setting not received, use Pueblo Meml altimeter setting and increase all MDAs 300 feet; increase LNAV Cats A/B visibility ¼ SM and Cats C/D visibility 1 SM and Circling Cats A/B visibility ¼ SM, Cat C 1 SM, and Cat D ½ SM.</p>	MISSED APPROACH: Climbing left turn to 8900 direct JOGEL and hold.
-----------	--	--

ASOS 119.025	DENVER CENTER 128.375 379.95	UNICOM 122.8 (CTAF) 0
-----------------	---------------------------------	--------------------------



VGSi and descent angle not coincident (VGSi Angle 3.00/TCH 40).				
HARVO 10400 045° 9000 035° 8180 7040				
JOSAT 3.10° TCH 36 7.4 NM to RW03				
WAXOX 3.6 NM to RW03				
YUBVU 1.6 NM to RW03				
RW03 2.2 NM to RW03				
CATEGORY	A	B	C	D
LNAV MDA	6500-1 743 (800-1)	6500-1¼ 743 (800-1¼)	6500-2 743 (800-2)	743 (800-2)
CIRCLING	6500-1 738 (800-1)	6500-1¼ 738 (800-1¼)	6500-2 738 (800-2)	6560-2½ 798 (800-2½)



SW-1, 10 JUL 2025 to 07 AUG 2025

SW-1, 10 JUL 2025 to 07 AUG 2025