

WAAS CH 65726 W05A	APP CRS 050°	Rwy Idg TDZE Apt Elev	8000 1498 1519
--	------------------------	-----------------------------	---

RNAV (GPS) RWY 5

TRI-CITIES (TRI)

RNP APCH.

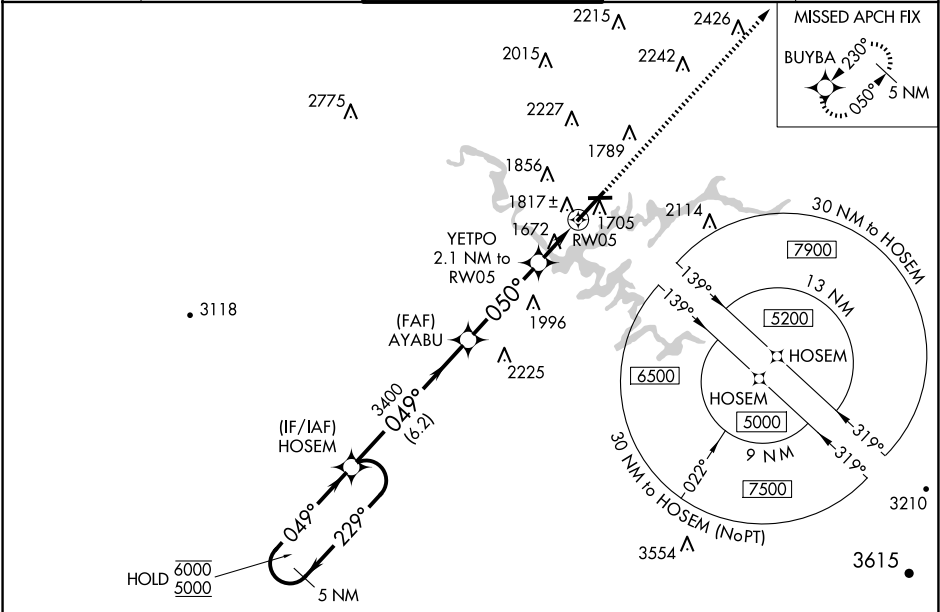
▼

▲

Circling to Rwy 9 NA at night. Circling NA northwest of Rwys 9 and 23.
For uncompensated Baro-VNAV systems, LNAV/VNAV NA below
-13°C or above 34°C.

MISSED APPROACH: Climb to 5200 direct BUYBA and hold.

ATIS 118.25	TRI-CITY APP CON ★ 134.425 349.0	TRI-CITY TOWER ★ 119.5 (CTAF) 257.8	GND CON 121.7 348.6	UNICOM 122.95
-----------------------	--	---	-------------------------------	-------------------------



5 NM Holding Pattern

HOSEM

6000 ← 229°

5000 → 049°

GP 3.00°

TCH 58

AYABU

3400

YETPO 2.1 NM to RW05

RW05

5200 BUYBA

*LNAV only.

6.2 NM

3.7 NM

2.1 NM

CATEGORY	A	B	C	D
LPV DA		1698/40	200 (200-¾)	
LNAV/VNAV DA		1998-1¾	500 (500-1¾)	
LNAV MDA	2080/55	582 (600-1)	2080-1¾	582 (600-1¾)
CIRCLING	2120-1 601 (700-1)	2180-1 661 (700-1)	2320-2¼ 801 (900-2¼)	2500-3 981 (1000-3)

ELEV 1519

TDZE 1498

TWR 1634

1618

4443 X 150

8000 150

050°

REIL Rwys 5 and 27

HIRL Rwy 5-23

MIRL Rwy 9-27

TDZ/CL Rwy 23