

VOR/DME TVC  
**114.6**  
Chan **93**

APP CRS  
**345°**

Rwy Ldg  
TDZE  
Apt Elev  
**N/A**  
**N/A**  
**624**

VOR-A  
CHERRY CAPITAL (TVC)

⚠

When local altimeter setting not received, use Bellaire altimeter setting and increase all MDA 60 feet and all Cat C visibility ¼ mile.

❄

-21°C

MISSED APPROACH: Climb to 1800 then climbing right turn to 3000 direct TVC VOR/DME and hold.

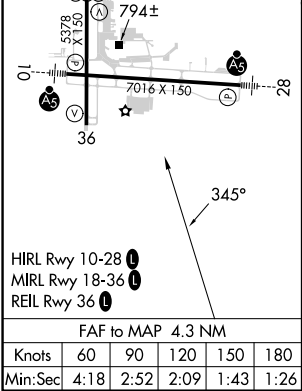
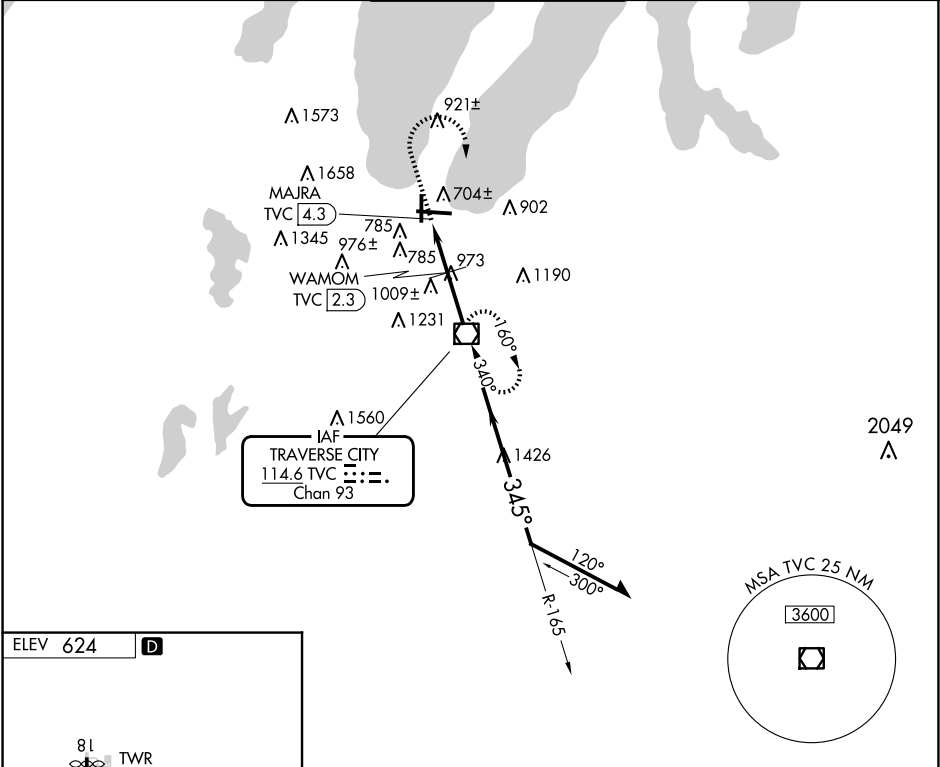
ATIS  
**119.175**

MINNEAPOLIS CENTER  
**132.9 338.3**

TRAVERSE CITY TOWER ★  
**124.2 (CTAF) 0 348.6**

GND CON  
**121.8 348.6**

UNICOM  
**122.95**



1800

3000

TVC

WAMOM TVC 2.3

MAJRA TVC 4.3

1440

2200

165°

345°

3000

Remain within 10 NM

\*1500 when using Bellaire altimeter setting.

CATEGORY	A	B	C	D
CIRCLING	1440-1¼	816 (900-1¼)	1500-2½ 876 (900-2½)	1720-3 1096 (1100-3)
WAMOM FIX MINIMUMS (DME REQUIRED)				
CIRCLING	1300-1	676 (700-1)	1500-2½ 876 (900-2½)	1720-3 1096 (1100-3)