

WAAS CH 97535 W28A	APP CRS 279°	Rwy Ldg TDZE Apt Elev	7016 616 624
--	------------------------	-----------------------------	---

RNAV (GPS) RWY 28
CHERRY CAPITAL (TVC)

RNP APCH - GPS.

▼ For uncompensated baro-VNAV systems, LNAV/VNAV NA below -19°C or above 54°C. Baro-VNAV and VDP NA when using ACB altimeter setting. When local altimeter setting not received, use ACB altimeter setting: increase DA 51 feet and all MDA 60 feet. Increase LPV all Cats visibility ½ SM, LNAV/VNAV visibility all Cats ¼ SM and LNAV Cat B visibility ¼ SM and C/D visibilities ½ SM and Circling Cat B/C visibility ¼ SM. For inop ALS, increase LPV all Cats visibility to 1 ½ SM, LNAV Cats C/D visibility to 2 SM. For inop ALS when using ACB altimeter setting, increase LPV all Cats visibility to 1 ½ SM, LNAV Cats C/D visibility to 2 ½ SM. * Missed approach requires minimum climb of 237 feet per NM to 2000.

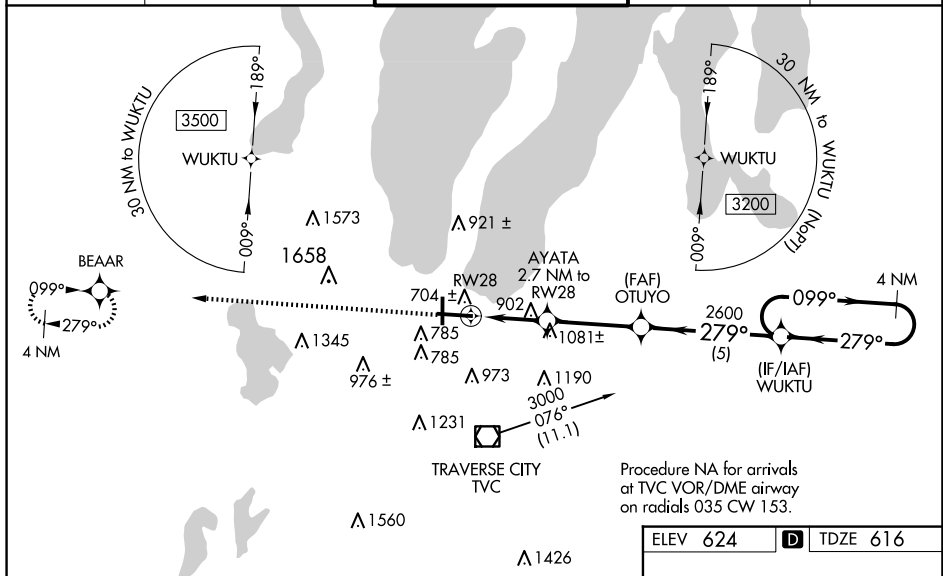
MALSR



MISSED APPROACH:
Climb to 3000 direct
BEAAR and hold.

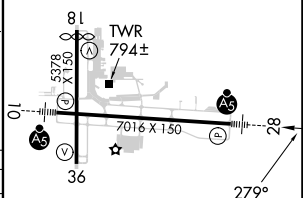
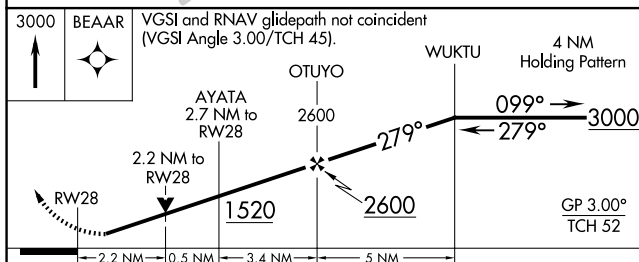
 -21°C


ATIS 119.175	MINNEAPOLIS CENTER 132.9 338.3	TRAVERSE CITY TOWER ★ 124.2 (CTAF) 0 348.6	GND CON 121.8 348.6	UNICOM 122.95
-----------------	-----------------------------------	---	------------------------	------------------



Procedure NA for arrivals
at TVC VOR/DME airway
on radials 035 CW 153.

ELEV 624	D	TDZE 616
----------	----------	----------



CATEGORY		A		B		C		D	
LPV	DA	*816-½				200 (200-½)			
LPV	DA	963-⅞				347 (400-⅞)			
INAV/ VNAV	DA	1330-2				714 (800-2)			
INAV	MDA	1340-½ 724 (800-½)				1340-1⅝ 724 (800-1⅝)			
 CIRCLING		1340-1 716 (800-1)				1500-2½ 876 (900-2½)		1720-3 1096 (1100-3)	

HIRL Rwy 10-28 **L**
MIRL Rwy 18-36 **L**
REIL Rwy 36 **L**