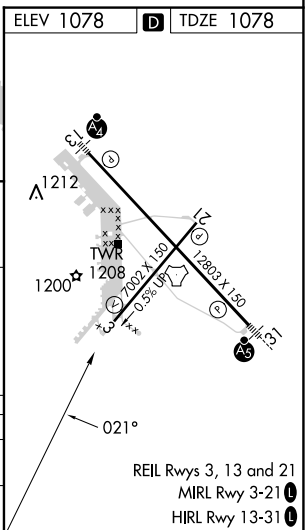
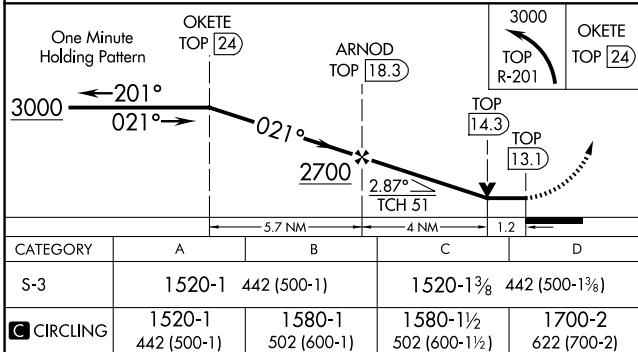
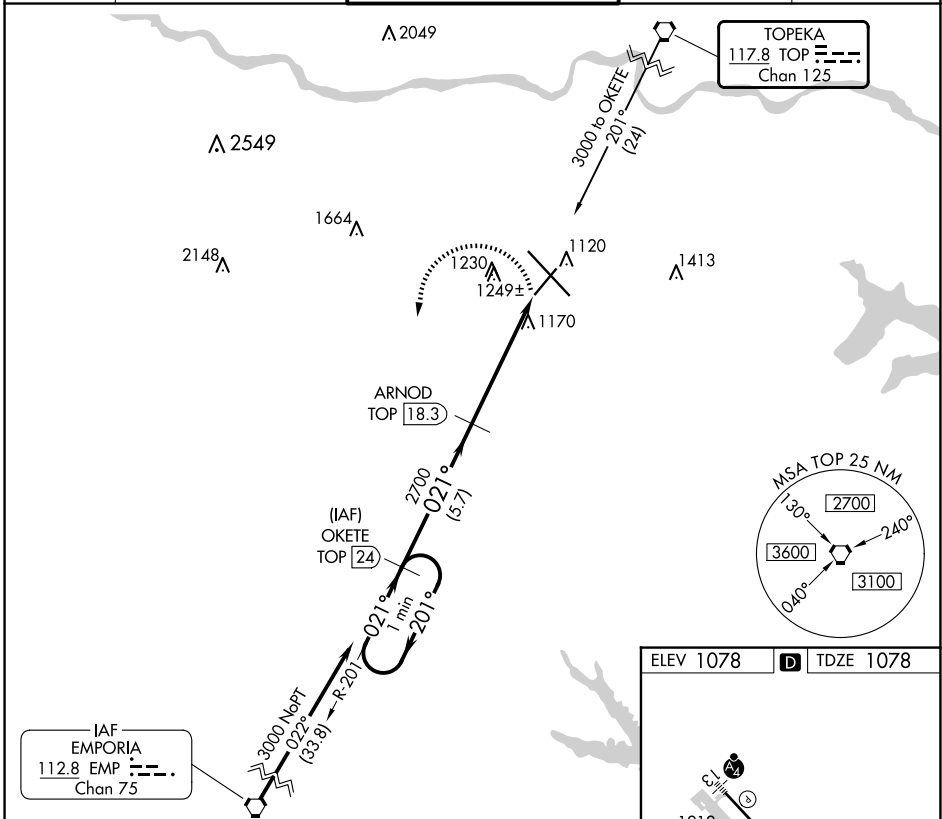


VOR/DME or TACAN RWY 3
TOPEKA RGNL (FOE)

MISSED APPROACH: Climbing left turn to 3000 via TOP R-201 to OKETE/24 DME and hold.

ATIS 128.25	KANSAS CITY CENTER 123.8 343.7	FORBES TOWER* 120.8 (CTAF) 0 340.2	GND CON 118.425 275.8	UNICOM 122.95
----------------	-----------------------------------	---------------------------------------	--------------------------	------------------



NC-2, 10 JUL 2025 to 07 AUG 2025

NC-2, 10 JUL 2025 to 07 AUG 2025