

WAAS CH 78399 W31A	APP CRS 312°	Rwy Idg 12803 TDZE 1037 Apt Elev 1078
----------------------------------------	------------------------	------------------------------------------------------------------

RNAV (GPS) RWY 31

TOPFKA RGNI (FOE)

T For inoperative MALSR, increase LPV all Cats visibility to RVR 4000, and LNAV/VNAV Cat D to RVR 5000. Baro-VNAV NA when using Philip Billard Muni altimeter setting.

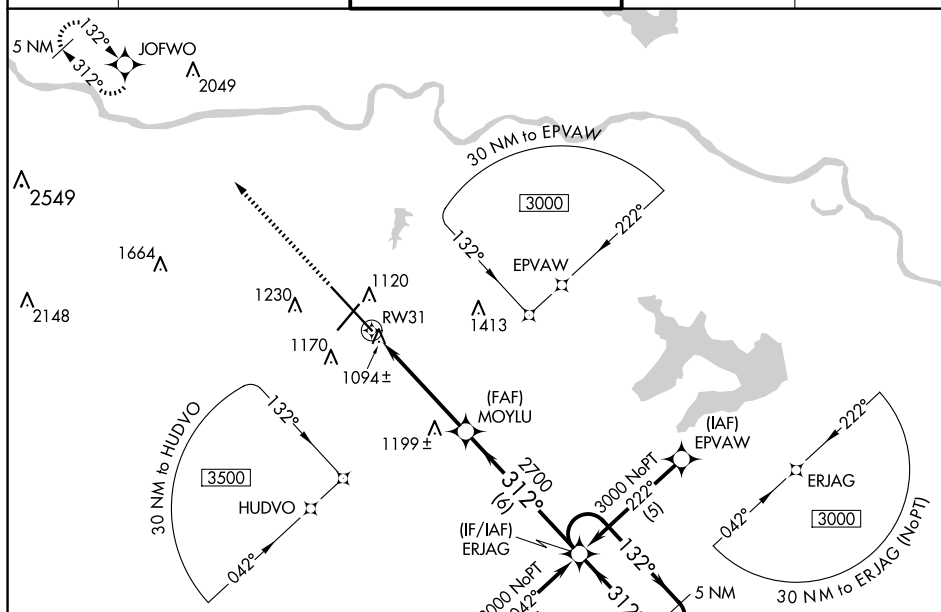
A If local altimeter setting not received, use Philip Billard Muni altimeter setting and increase all DAs/MDAs 60 feet. Baro-VNAV NA below -17°C (2°F). DME/DME RNP-0.3 NA. VDP NA when using Philip Billard Muni altimeter setting.

MALSR

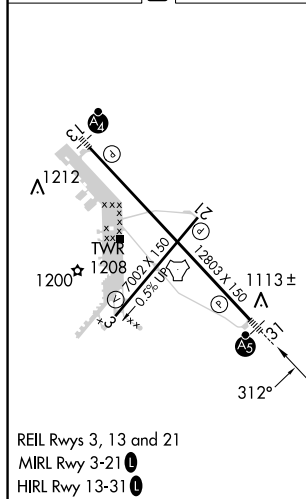


MISSED APPROACH.
Climb to 3600 direct
JOFWO and hold.

ATIS 128.25	KANSAS CITY CENTER 123.8 343.7	FORBES TOWER* 120.8 (CTAF) 0 340.2	GND CON 118.425 275.8	UNICOM 122.95
----------------	-----------------------------------	---------------------------------------	--------------------------	------------------



ELEV 1078	D	TDZE 1037
-----------	----------	-----------



The diagram illustrates the RW31 holding pattern at the MOYLU intersection. Key features include:

- Holding Pattern:** A 5 NM Holding Pattern centered at MOYLU.
- Altitudes:** 3600 ft (JOFWO), 2700 ft (MOYLU), and 3000 ft (ERJAG).
- Angles:** 132° outbound and 312° inbound from MOYLU.
- Distances:** 1.3 NM from RW31 to MOYLU, 3.7 NM from MOYLU to ERJAG, and 6 NM from ERJAG to the next point.
- GP 3.00° TCH 58**

CATEGORY	A	B	C	D
LPV DA	1298/24 261 (300-½)			
LNAV/VNAV DA	1357/24 320 (300-½)			1357/40 320 (300-¾)
LNAV MDA	1500/24	463 (500-½)	1500/40 463 (500-¾)	1500/50 463 (500-1)
C CIRCLING	1520-1 442 (500-1)	1580-1 502 (600-1)	1580-1½ 502 (600-1½)	1700-2 622 (700-2)