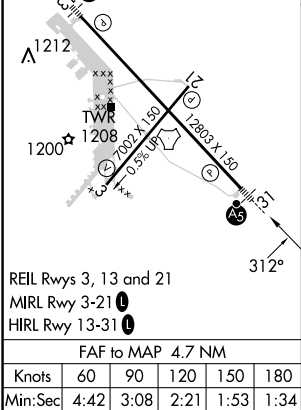
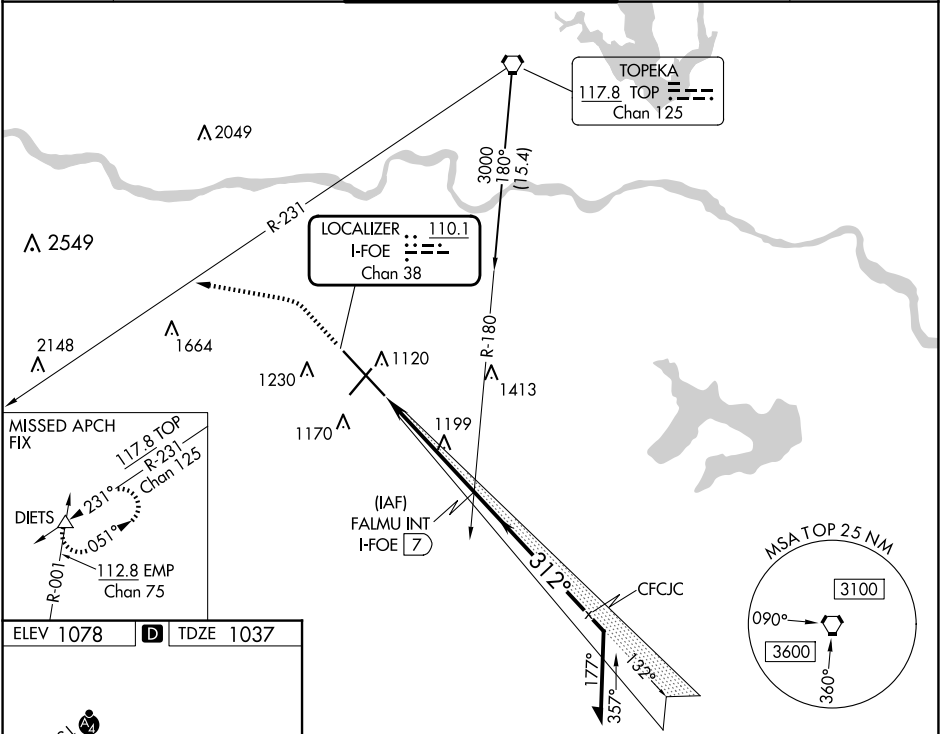


LOC/DME I-FOE	APP CRS	Rwy Idg	12803
110.1	312°	TDZE	1037
Chan 38		Apt Elev	1078

ILS or LOC RWY 31
TOPEKA RGNL (F O E)

RADAR required for Cat E for procedure entry.		MALSR AS	MISSED APPROACH: Climb to 1900 then climbing left turn to 3700 on heading 275° and on TOP VORTAC R-231 to DIETS INT and hold.
▼	For inop ALS, increase S-ILS Cat E visibility to RVR 4000 and		
▲	S-LOC Cat E visibility to 1¼ SM. *RVR 1800 authorized with use of FD or AP or HUD to DA.		

ATIS 128.25	KANSAS CITY CENTER 123.8 343.7	FORBES TOWER* 120.8 (CTAF) 0 340.2	GND CON 118.425 275.8	UNICOM 122.95
----------------	-----------------------------------	---------------------------------------	--------------------------	------------------



1900	3700	TOP R-231	DIETS	FALMU INT I-FOE (7)	Remain within 10 NM
↑	hdg 275°	△			
Cat E procedure turn NA.					
I-FOE (2.3)	I-FOE (3.4)	I-FOE (7)	2600	3000	GS 3.00° TCH 58
1.2 NM	3.6 NM				
CATEGORY	A	B	C	D	E
S-ILS 31*	1237/24 200 (200-½)				
S-LOC 31	1460/24	423 (400-½)	1460/40	423 (400-¾)	
Ⓢ CIRCLING	1520-1 442 (500-1)	1580-1 502 (600-1)	1580-1½ 502 (600-1½)	1700-2 622 (700-2)	1720-2¼ 642 (700-2¼)

NC-2, 10 JUL 2025 to 07 AUG 2025

NC-2, 10 JUL 2025 to 07 AUG 2025