

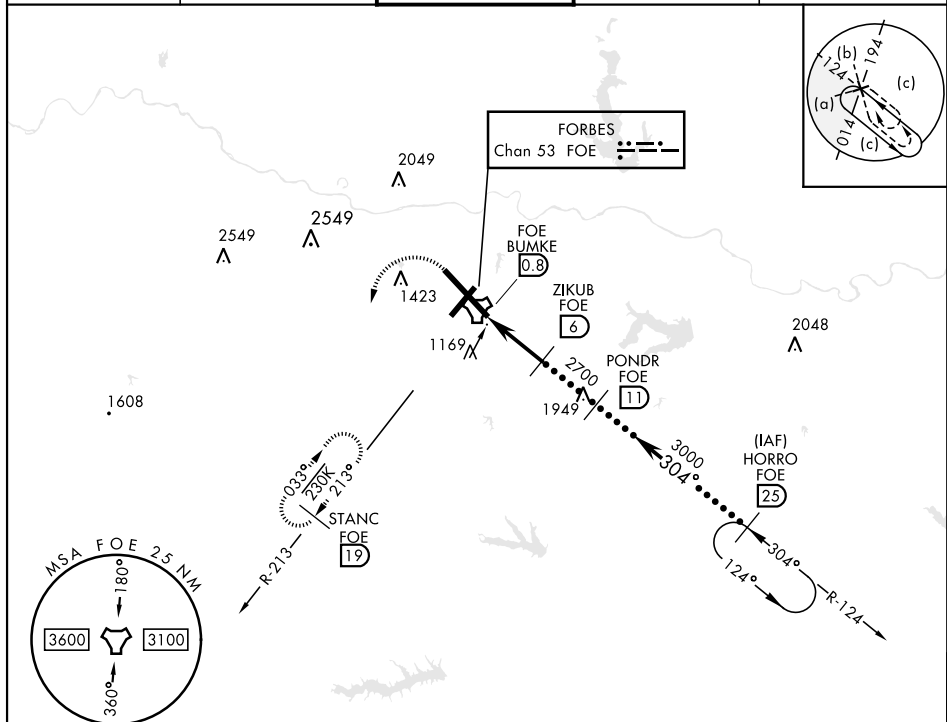


HI-TACAN RWY 31

TACAN FOE Chan 53	APCH CRS 304°	Rwy Idg 12,803 TDZE 1037 Arpt Elev 1078	[USAF]	TOPEKA RGNL (KFOE)
 * When ALS inop, increase CAT CDE vis to 1 1/2 miles.				MISSED APPROACH: Climbing left turn to 3000 via heading 190° and FOE TACAN R-213 to STANC/19 DME and hold.
ATIS 128.25	KANSAS CITY CENTER 123.8 343.7	FORBES TOWER ★ 120.8 (CTAF) 0 340.2	GND CON 118.425 275.8	UNICOM 122.95



EMERG SAFE ALT 100 NM 3600

EMERG SAFE ALT 100 NM 3600

3000
FOE R-213

STANC
FOE
19

TACAN
FOE

FOE BUMKE
0.8

FOE 2.1

ZIKUB
FOE
6

POND R
FOE
11

HORRO
FOE
25

FL250
10,000

3000

304°

2.90°
TCH 58

5.2 NM

CATEGORY

C

D

E

S-31 *

1520/50 483 (500-1)

C CIRCLING

1580-1½
502 (600-1½)

1700-2
622 (700-2)

1720-2¼
642 (700-2¼)

ELEV 1078

TDZE 1037

Rwy 3 ldg 7001'
Rwy 21 ldg 7001'

TWR 1208

1200

12.802 x 150

7002 x 150

1200

304°

MIRL Rwy 3-21
REIL Rwy 3, 13, and 21
REIL Rwy 13-31

TOPEKA, KANSAS

38° 57'N-95° 40'W

TOPEKA RGNL (KFOE)

Amdt 3A 21MAR24

HI-TACAN RWY 31