

WAAS Ch <b>87099</b> <b>W13A</b>	APP CRS <b>130°</b>	Rwy Idg <b>4559</b> TDZE <b>388</b> Apt Elev <b>390</b>
--	------------------------	---

RNAV (GPS) RWY 13

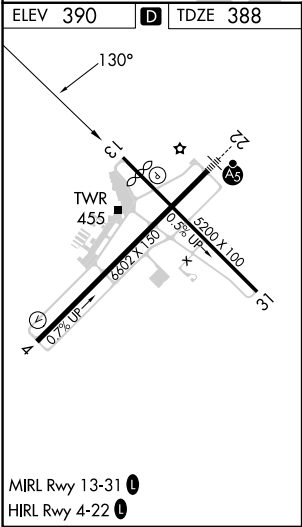
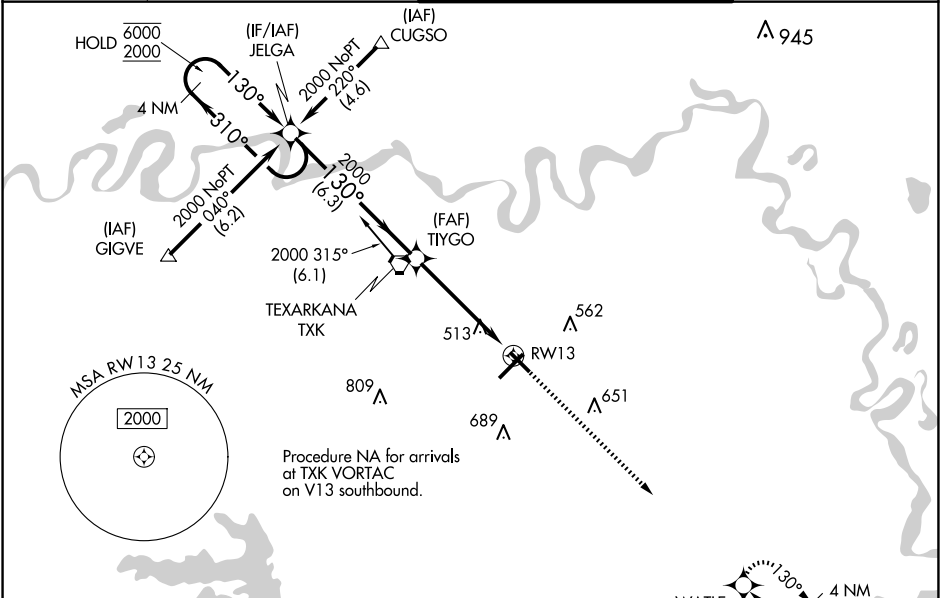
TEXARKANA RGNL-WEBB FLD (TXK)

RNP APCH - GPS.

Baro-VNAV and VDP NA when using De Queen altimeter setting. Rwy 13 helicopter visibility reduction below ¾ SM NA. For uncompensated Baro-VNAV systems, LNAV/VNAV NA below -15°C or above 54°C. When local altimeter setting not received, use De Queen altimeter setting and increase LPV DA to 748 feet and all Cats visibility ¼ SM, LNAV/VNAV DA to 868 feet all Cats visibility ¾ SM, and all MDAs 100 feet and LNAV and Circling Cats C/D visibility ¼ SM.

MISSED APPROACH:  
Climb to 2000 direct WATLE and hold.

ATIS <b>120.2</b>	FORT WORTH CENTER <b>123.925 269.475</b>	TEXARKANA TOWER★ <b>123.875 (CTAF) 235.625</b>	GND CON <b>119.225</b>
----------------------	---	---	---------------------------



4 NM Holding Pattern				VGSI and RNAV glidepath not coincident (VGSI Angle 3.00/TCH 48).		2000	WATLE
GP 3.00° TCH 54				6.3 NM		3.8 NM	1.2 NM
CATEGORY	A		B	C		D	
LPV DA			648-¾	260 (300-¾)			
LNAV/VNAV DA			768-1	380 (400-1)			
LNAV MDA	780-1		392 (400-1)	780-1½		392 (400-1½)	
CIRCLING	820-1 430 (500-1)		900-1 510 (600-1)	1000-1¾ 610 (700-1¾)		1080-2¼ 690 (700-2¼)	