

TACAN RWY 23

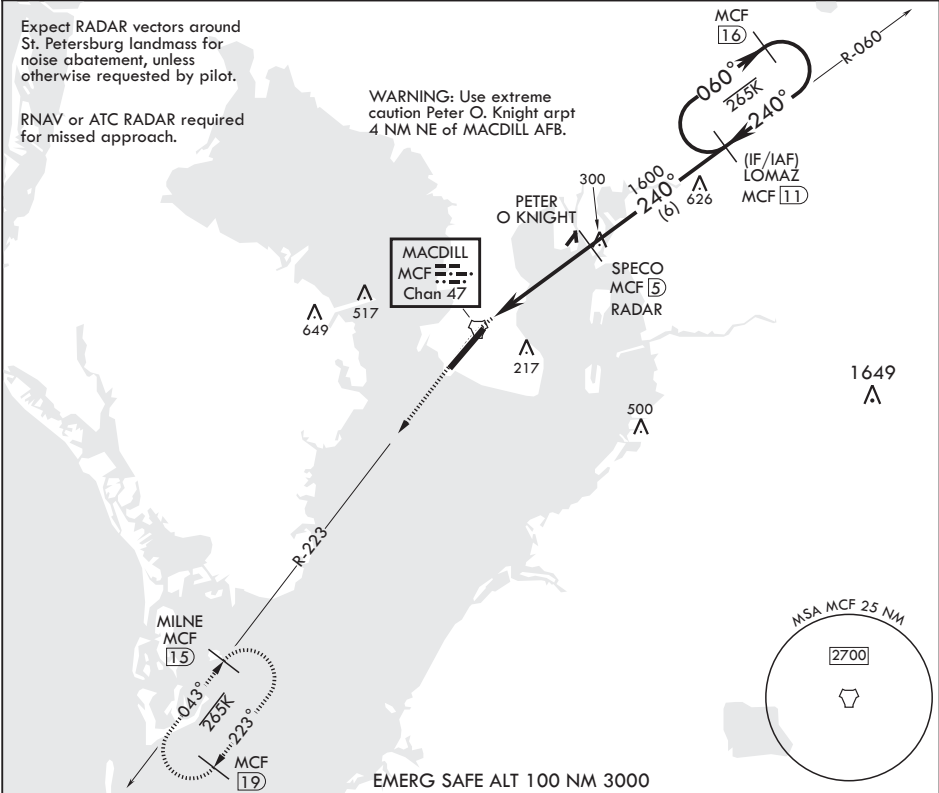
TACAN MCF Chan 47	APCH CRS 240°	Rwy ldg TDZE Arpt Elev	11,421 14 14
----------------------	------------------	------------------------------	--------------------

AL-418 (USAF)

MACDILL AFB (KMCF)

* When ALS inop, increase CAT AB RVR to 55, vis to 1 mile; CAT CDE vis to 1 1/4 miles. ** Circling not authorized NW of Rwy 5-23.	ALSF-1 	MISSED APPROACH: Climb to 1600 via MCF TACAN R-223 to MILNE and hold.
--	------------	---

ATIS 133.825 270.1	TAMPA APP CON 124.95 354.0	TOWER 120.175 294.7	GND CON 118.575 275.8
-----------------------	-------------------------------	------------------------	--------------------------



1600 MCF R-223	MILNE MCF 15	LOMAZ 11	060° 1700	ELEV 14	TDZE 14
TACAN	FAVIS 7	SPECO 5 RADAR	240° 1600	≤ 2.98° TCH 56	240° 1700
CATEGORY	A	B	C	D	E
S-23*	440/24	426 (500-½)	440/40	426	(500-¾)
CIRCLING**	520-1 486 (600-1)	540-1 526 (600-1)	540-1½ 526 (600-1½)	580-2 566 (600-2)	1020-3 1006 (1100-3)
HIRL all Rws					

TACAN RWY 23

SE-3, 10 JUL 2025 to 07 AUG 2025

SE-3, 10 JUL 2025 to 07 AUG 2025