

RNAV (GPS) RWY 23

APCH CRS	Rwy Idg	11,421
229°	TDZE	14
	Arprt Elev	14

AL-418 (USAF)

MACDILL AFB (KMCF)

RNP APCH

ALSF-1

MISSED APPROACH: Climb to 1600, then climbing left turn to 1600 direct MILNE and hold.

\* When ALS inop, increase vis to 1 1/4 miles.  
\*\* When ALS inop, increase CAT AB RVR to 55, vis to 1 mile; CAT CDE vis to 1 1/4 miles.

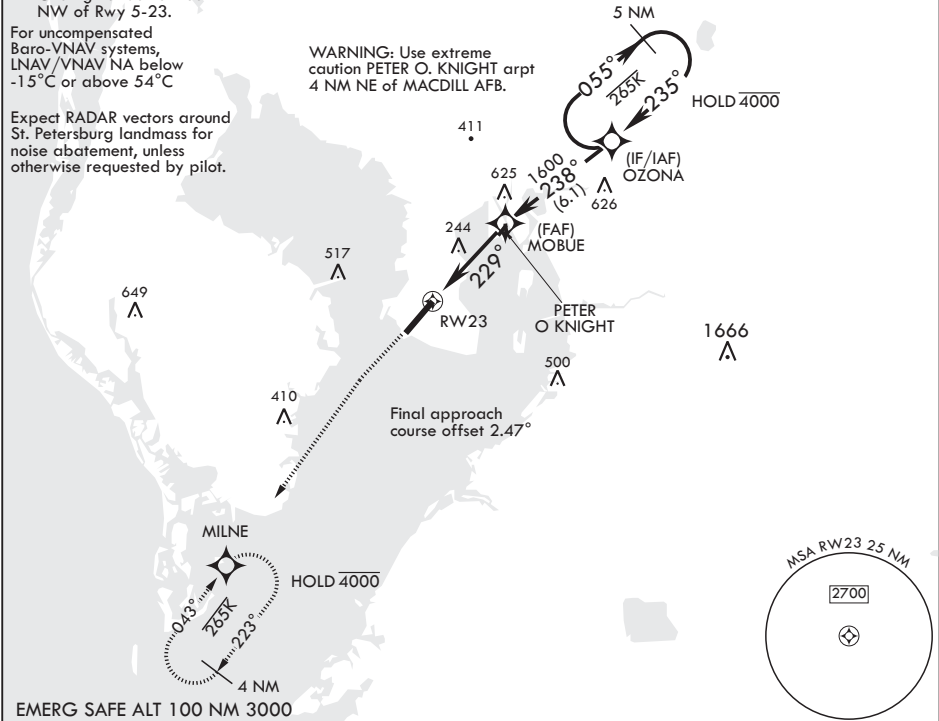
ATIS 133.825 270.1	TAMPA APP CON 124.95 354.0	TOWER 120.175 294.7	GND CON 118.575 275.8
-----------------------	-------------------------------	------------------------	--------------------------

\*\*\* Circling not authorized NW of Rwy 5-23.

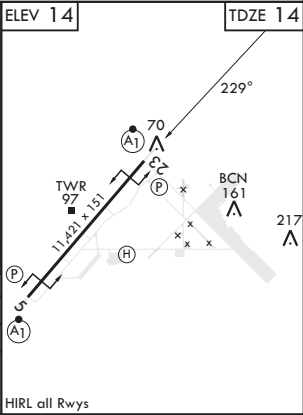
For uncompensated Baro-VNAV systems, LNAV/VNAV NA below -15°C or above 54°C

Expect RADAR vectors around St. Petersburg landmass for noise abatement, unless otherwise requested by pilot.

WARNING: Use extreme caution PETER O. KNIGHT arprt 4 NM NE of MACDILL AFB.



1600	MILNE	OZONA	5 NM	ELEV 14	TDZE 14
↑	⊙		Holding Pattern		
RW23	1.2 NM to RW23	MOBUE	238°	1700	
4.8 NM	229°	1600	235°	GP 3.00°	TCH 54
CATEGORY	A	B	C	D	E
LNAV/VNAV DA*	440/40		426	(500-¾)	
LNAV MDA**	440/24	426 (500-½)	440/40	426	(500-¾)
CIRCLING***	500-1	540-1	540-1½	580-2	1020-3
	486 (500-1)	526 (600-1)	526 (600-1½)	566 (600-2)	1006 (1100-3)



RNAV (GPS) RWY 23