

TAMPA, FLORIDA

AL-417 (FAA)

24305

WAAS CH 63220 W36A	APP CRS 344°	Rwy Idg 2311 TDZE 7 Apt Elev 7
--	------------------------	---

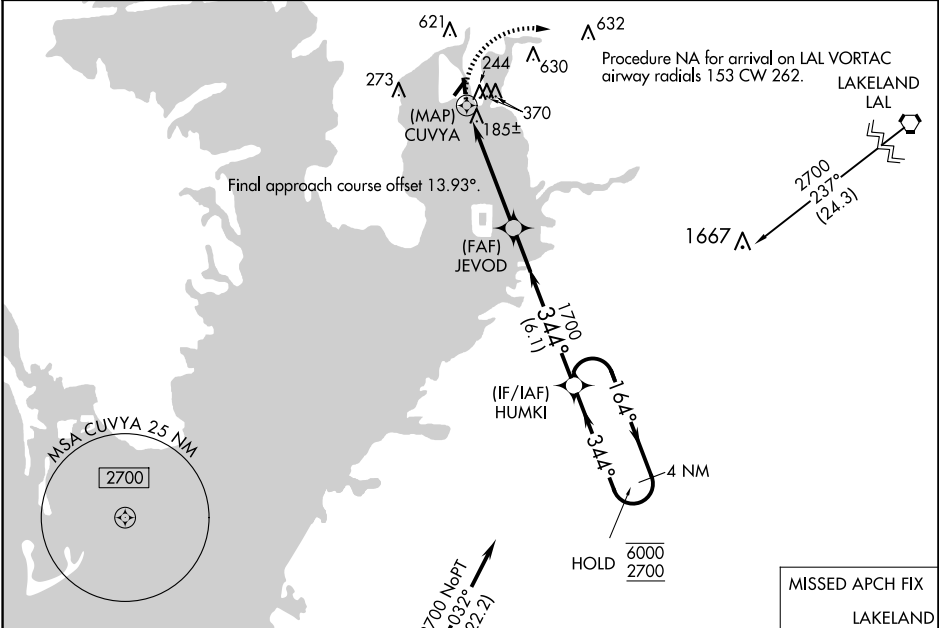
RNAV (GPS) RWY 36
PETER O KNIGHT (TPF)

RNP APCH.

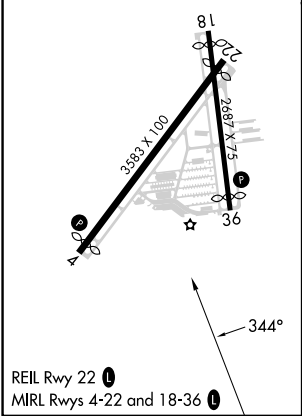
⚠ Circling NA northwest of Rwy 4-22. Procedure NA at night. Rwy 36 helicopter visibility reduction below 1 SM NA. When local altimeter setting not received, use Tampa Intl altimeter setting and increase all MDA 20 feet. Circling NA to Rwy 18.

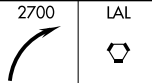
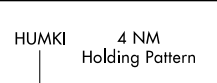
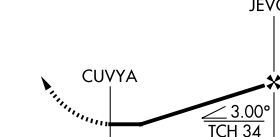
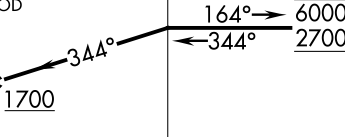
MISSED APPROACH: Climbing right turn to 2700 direct LAL VORTAC and hold.

AWOS-3 118.925	TAMPA APP CON 119.9 290.3	CLNC DEL 119.8	UNICOM 122.725 (CTAF) 0
--------------------------	-------------------------------------	--------------------------	-----------------------------------



ELEV 7	D	TDZE 7
---------------	----------	---------------



				
				
0.5		4.7 NM	6.1 NM	
CATEGORY	A	B	C	D
LP MDA	440-1	433 (500-1)	NA	NA
LNAV MDA	500-1	493 (500-1)	NA	NA
C CIRCLING	720-1	713 (800-1)	NA	NA

TAMPA, FLORIDA
Amdt 2E 26MAR20

27°55'N-82°27'W

PETER O KNIGHT (TPF)
RNAV (GPS) RWY 36

SE-3, 10 JUL 2025 to 07 AUG 2025

SE-3, 10 JUL 2025 to 07 AUG 2025