

APP CRS  
222°

Rwy Idg  
3403

TDZE  
7

Apt Elev  
7

RNAV (GPS) RWY 22

PETER O KNIGHT (TPF')

RNP APCH.

▼

Circling NA northwest of Rwy 4-22. Procedure NA at night. Rwy 22 helicopter visibility reduction below 1 SM NA. When local altimeter setting not received, use Tampa Init altimeter setting and increase all MDA 20 feet. Circling NA to Rwy 18.

MISSED APPROACH: Climbing left turn to 2700 direct LAL VORTAC and hold.

AWOS-3 118.925	TAMPA APP CON 119.9 290.3	CLNC DEL 119.8	UNICOM 122.725 (CTAF) 0
-------------------	------------------------------	-------------------	----------------------------

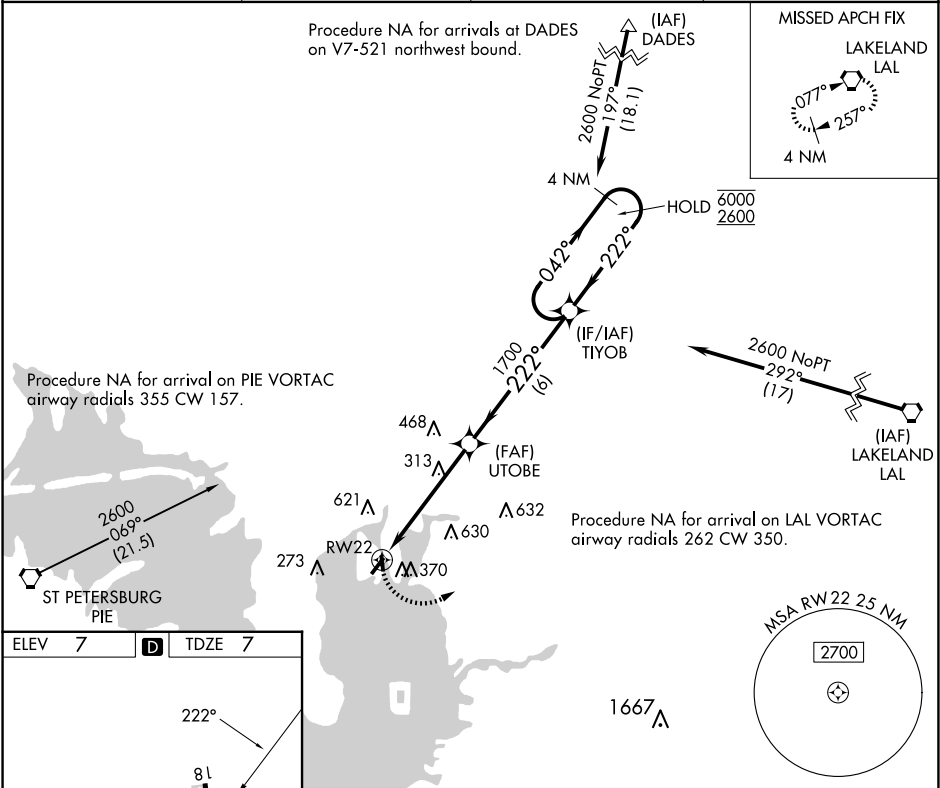


Diagram showing the layout of RWY 22 and RWY 36. RWY 22 is 3583 x 100. RWY 36 is 2687 x 75. A star symbol is located between the two runways. A small circle with the number 2 is near RWY 22, and a small circle with the number 36 is near RWY 36.

Diagram showing the approach procedure for RWY 22. The procedure starts at a 2700 ft altitude, descends to 1700 ft, and then descends to 6000 ft. The approach is a 3.00° TCH 40. The distance from the start of the approach to the runway is 5.2 NM. The distance from the 1700 ft altitude to the runway is 6 NM. The approach is labeled RWY22. The diagram also shows the LAL (Localizer) and TIYOB (Terminal Identifier) symbols. The approach is a 4 NM Holding Pattern. The approach is labeled 042° and 222°.

CATEGORY	A	B	C	D
LNAV MDA	580-1	573 (600-1)	NA	
<b>C</b> CIRCLING	720-1	713 (800-1)	NA	

REIL Rwy 22 **1**  
MIRL Rwy 4-22 and 18-36 **1**