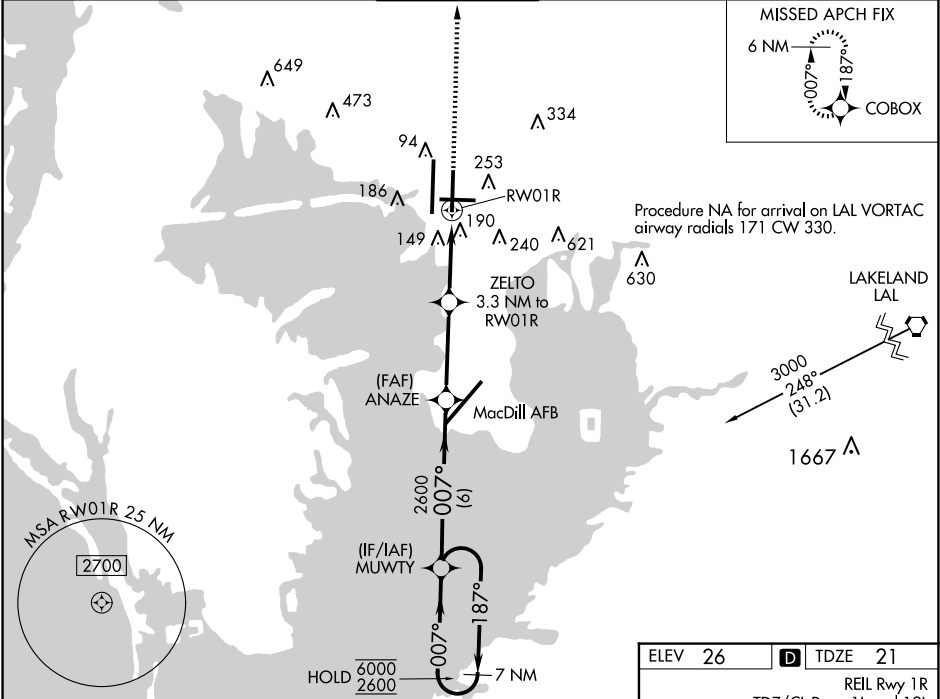


WAAS CH 87105 W01B	APP CRS 007°	Rwy Idg 8300 TDZE 21 Apt Elev 26
--	------------------------	---

RNAV (GPS) Y RWY 1R
TAMPA INTL (TPA)

RNP APCH - GPS.			MISSED APPROACH: Climb to 2000 direct COBOX and hold.		
▼ For uncompensated Baro-VNAV systems, LNAV/VNAV NA below 4°C or above 54°C. ▲ Simultaneous approach authorized with Rwy 1L LNAV procedure NA during simultaneous operations. Use of FD or AP required during simultaneous operations.					

ARR 126.45	D-ATIS 128.475	DEP 128.475	TAMPA APP CON 118.5 307.175	TAMPA TOWER 119.5 269.4	GND CON 121.7 269.4	CLNC DEL 133.6	CPDLC
----------------------	--------------------------	-----------------------	---------------------------------------	-----------------------------------	-------------------------------	--------------------------	-------



7 NM Holding Pattern		VGSI and RNAV glidepath not coincident (VGSI Angle 3.00/TCH 71).		2000	COBOX
MUWTY		ANAZE	ZELTO	RW01R	
6000 ← 187°		2600	3.3 NM to	1.1 NM to	
2600 → 007°		2600	RW01R	RW01R	
GP 3.50°		2600	1300	RW01R	
TCH 55		6 NM	3.5 NM	2.2 NM	1.1 NM
CATEGORY	A	B	C	D	E
LPV DA	291/45	270 (300-7/8)		NA	
LNAV/VNAV DA	440/60	419 (500-1 1/4)		NA	
LNAV MDA	440/55	419 (500-1)	440/60	419 (500-1 1/4)	
CIRCLING	600-1	574 (600-1)	680-1 3/4 654 (700-1 3/4)	980-3	954 (1000-3)

