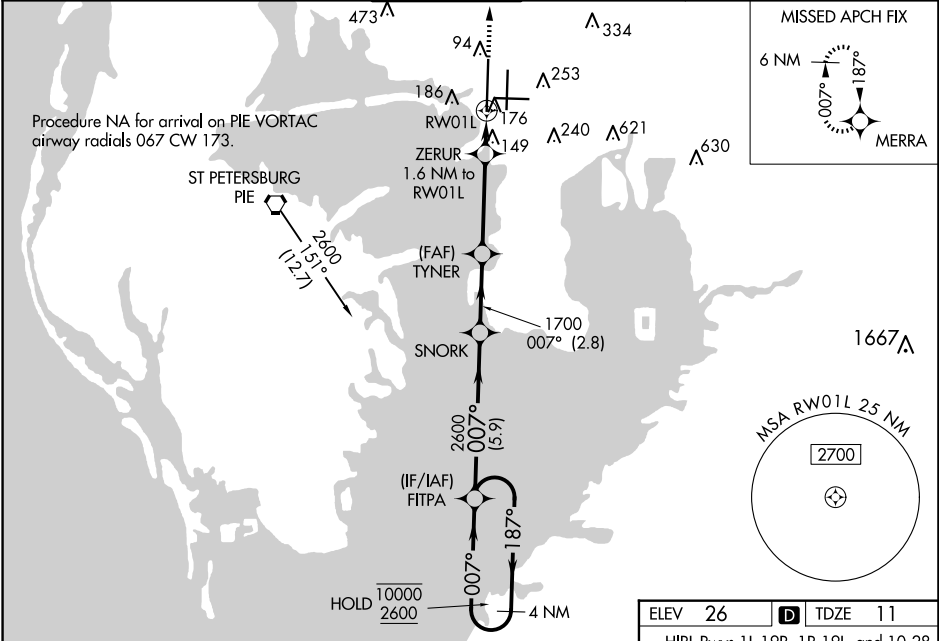


WAAS CH <b>50406</b> <b>W01A</b>	APP CRS <b>007°</b>	Rwy Idg <b>10800</b> TDZE <b>11</b> Apt Elev <b>26</b>
--	------------------------	--

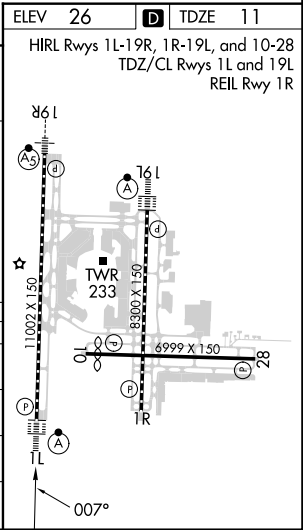
RNAV (GPS) Y RWY 1L

TAMPA INTL (TPA)

RNP APCH - GPS.				ALSIF-2		MISSED APPROACH: Climb to 2000 direct MERRA and hold.	
For uncompensated Baro-VNAV systems, LNAV/VNAV NA below 4°C or above 54°C. For inop ALSIF, increase LPV Cat E visibility to RVR 4000, LNAV/VNAV all Cats visibility to RVR 6000, and LNAV Cat E visibility to 1¼ SM. Simultaneous approach authorized with Rwy 1R. LNAV procedure NA during simultaneous operations. Use of FD or AP required during simultaneous operations.							
ARR	D-ATIS	DEP	TAMPA APP CON	TAMPA TOWER	GND CON	CLNC DEL	CPDLC
126.45	128.475		118.5 307.175	119.5 269.4	121.7 269.4	133.6	



4 NM Holding Pattern		VGSI and RNAV glidepath not coincident (VGSI Angle 3.00/TCH 71).		2000	MERRA
10000 ← 187° 2600 ← 007°		007° → 2600		1700	560
GP 3.00° TCH 54		5.9 NM		2.8 NM	3.6 NM
FITPA		SNORK		TYNER	
				ZERUR 1.6 NM to RW01L	
				RW01L	
CATEGORY	A	B	C	D	E
LPV DA	211/18		200 (200-½)		
LNAV/VNAV DA	431/40		420 (500-¾)		
LNAV MDA	440/24	429 (500-½)	440/40	429 (500-¾)	
CIRCLING	600-1	574 (600-1)	680-1¾ 654 (700-1¾)	980-3	954 (1000-3)



SE-3, 10 JUL 2025 to 07 AUG 2025

SE-3, 10 JUL 2025 to 07 AUG 2025