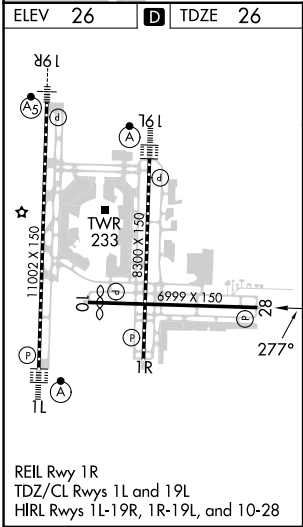
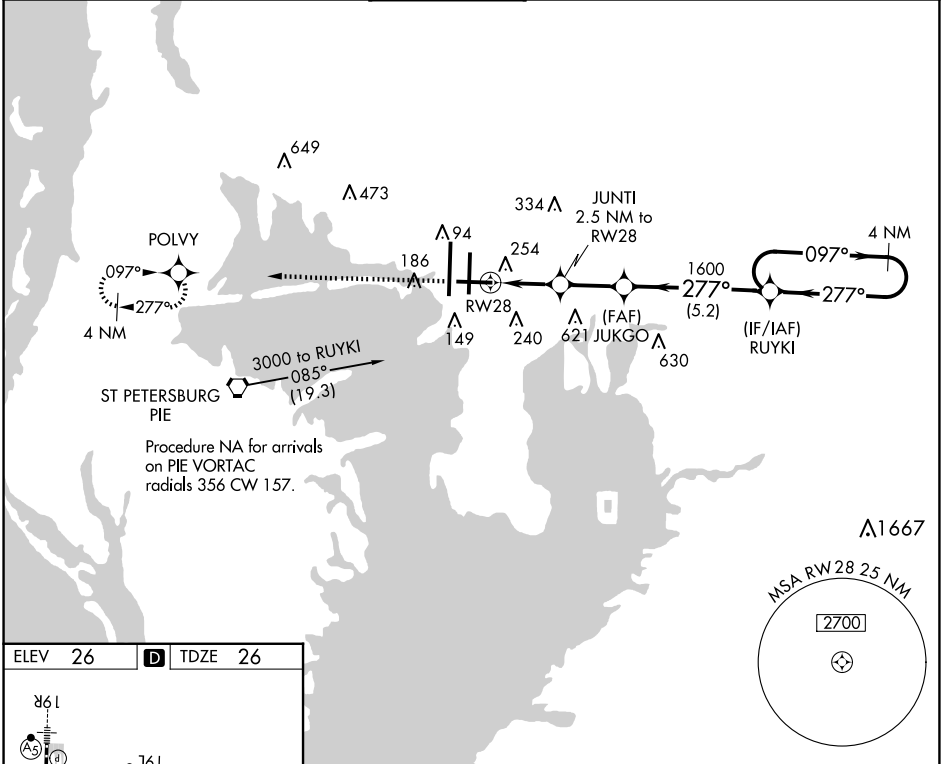


For uncompensated Baro-VNAV systems, LNAV/VNAV NA below -15°C (5°F) or above 43°C (109°F).
DME/DME RNP-0.3 NA. Helicopter visibility reduction below ¾ SM NA.

MISSED APPROACH: Climb to 2000 direct POLVY and hold.

ARR 126.45	D-ATIS 128.475	TAMPA APP CON 118.5 307.175	TAMPA TOWER 119.5 269.4	GND CON 121.7 269.4	CLNC DEL 133.6	CPDLC
----------------------	--------------------------	---------------------------------------	-----------------------------------	-------------------------------	--------------------------	-------



2000	POLVY	JUKGO	RUYKI	4 NM Holding Pattern
* LNAV only.	JUNTI 2.5 NM to RW28	1600	097°→ 2000 ← 277°	GP 3.00° TCH 50
	RW28	860*	1600	
	2.5 NM	2.3 NM	5.2 NM	
CATEGORY	A	B	C	D
LPV DA		389-1½	363 (400-1½)	
LNAV/VNAV DA		468-1½	442 (500-1½)	
LNAV MDA	520-1	494 (500-1)	520-1¾	494 (500-1¾)
CIRCLING	600-1	574 (600-1)	680-1¾ 654 (700-1¾)	980-3 954 (1000-3)