




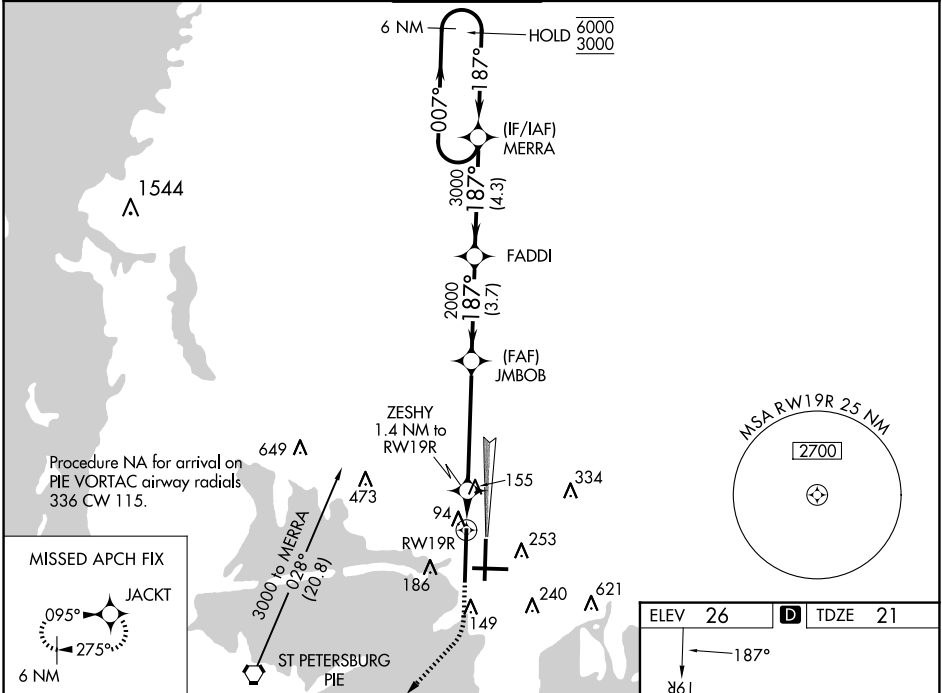
WAAS CH <b>40406</b> <b>W19B</b>	APP CRS <b>187°</b>	Rwy Idg <b>11002</b> TDZE <b>21</b> Apt Elev <b>26</b>
--	------------------------	--





RNAV (GPS) RWY 19R

TAMPA INTL (TPA)

RNP APCH - GPS.		MALSR 	MISSED APPROACH: Climb to 800 then climbing right turn to 2000 direct JACKT and hold.
 	LNAV procedure NA during simultaneous operations. Simultaneous approach authorized. Use of FD or AP required during simultaneous operations. For uncompensated Baro-VNAV systems, LNAV/VNAV NA below 4°C or above 54°C. For inop ALS, increase LPV visibility Cat E to RVR 4000, LNAV/VNAV visibility all Cats to RVR 6000, and LNAV visibility Cat C/D/E to RVR 6000. * RVR 1800 authorized with use of FD or AP or HUD to DA.		

ARR	D-ATIS	DEP	TAMPA APP CON	TAMPA TOWER	GND CON	CLNC DEL	CPDLC
126.45		128.475	118.5 307.175	119.5 269.4	121.7 269.4	133.6	



800	2000	JACKT	VGSI and RNAV glidepath not coincident (VGSI Angle 3.00/TCH 71).		
					
					
ZESHY 1.4 NM to RW19R		JMBOB 2000	FADDI 187°	MERRA 007°	6000
RW19R		520	3000	187°	3000
1.4 NM		4.6 NM	3.7 NM	4.3 NM	
CATEGORY	A	B	C	D	E
LPV DA*	221/24		200 (200-½)		
LNAV/VNAV DA	440/40		419 (500-¾)		
LNAV MDA	440/24		419 (500-¾)		
CIRCLING	600-1	574 (600-1)	680-1¾ 654 (700-1¾)	980-3	954 (1000-3)

