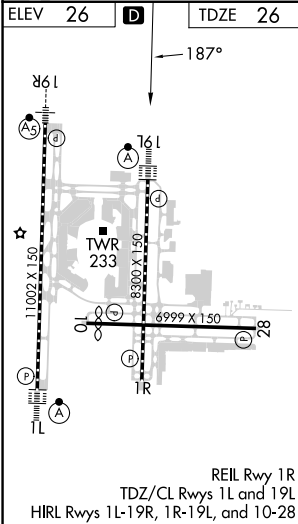
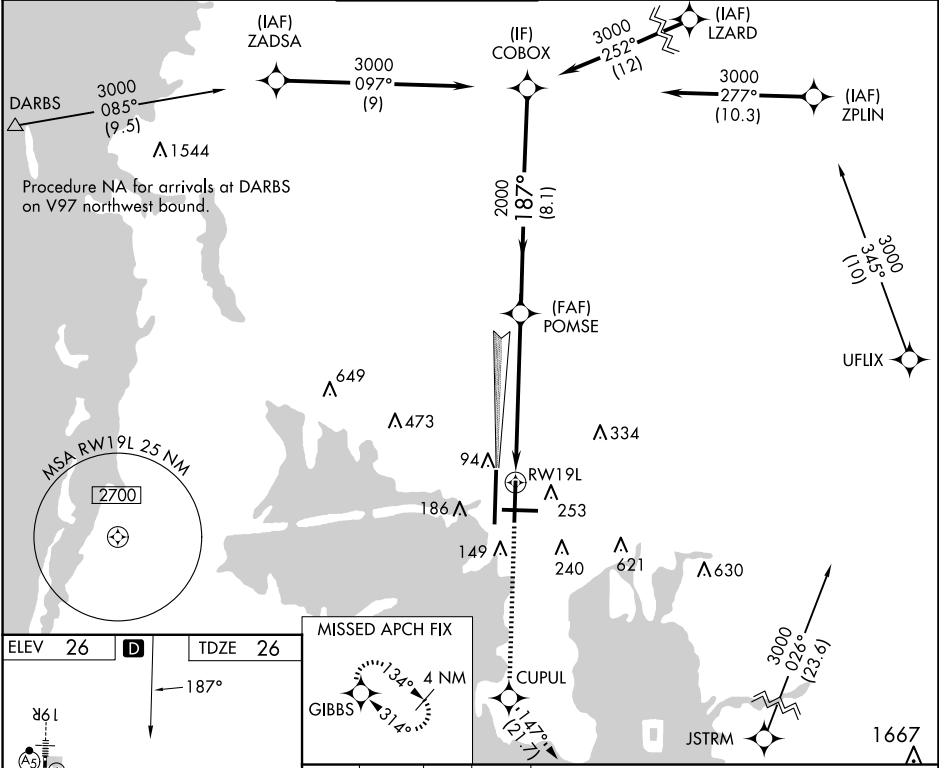


WAAS CH 49100 W19A	APP CRS 187°	Rwy Idg 8300 TDZE 26 Apt Elev 26
--	------------------------	---

RNAV (GPS) RWY 19L
TAMPA INTL (TPA)

RNP APCH - GPS			ALSF-2 	MISSED APPROACH: Climb to 2000 direct CUPUL and on track 147° to GIBBS and hold.
▼ LNAV procedure NA during simultaneous operations. For uncompensated Baro-VNAV systems, LNAV/VNAV NA below 4°C or above 54°C. Simultaneous approach authorized. ▲ Use of FD or AP required during simultaneous operations. For inop ALS, increase LNAV/VNAV visibility all Cats to RVR 6000, and LNAV visibility Cat C/D to 1½ SM.				

ARR 126.45	D-ATIS 128.475	DEP 128.475	TAMPA APP CON 118.5 307.175	TAMPA TOWER 119.5 269.4	GND CON 121.7 269.4	CLNC DEL 133.6	CPDLC
----------------------	--------------------------	-----------------------	---------------------------------------	-----------------------------------	-------------------------------	--------------------------	-------



MISSED APCH FIX				VGSi and RNAV glidepath not coincident (VGSi Angle 3.00/TCH 74).			
2000	CUPUL	tr 147°	GIBBS	POMSE	COBOX		
				1.3 NM to RW19L	2000	3000	GP 3.00° TCH 51
				1.3 NM	4.7 NM	8.1 NM	
CATEGORY	A	B	C	D			
LPV DA	226/18		200 (200-½)				
LNAV/VNAV DA	440/40		414 (500-¾)				
LNAV MDA	520/24	494 (500-½)	520/50	494 (500-1)			
CIRCLING	600-1	574 (600-1)	680-1¾	980-3	654 (700-1¾)	954 (1000-3)	