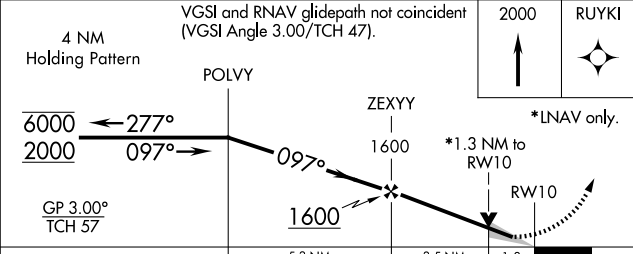
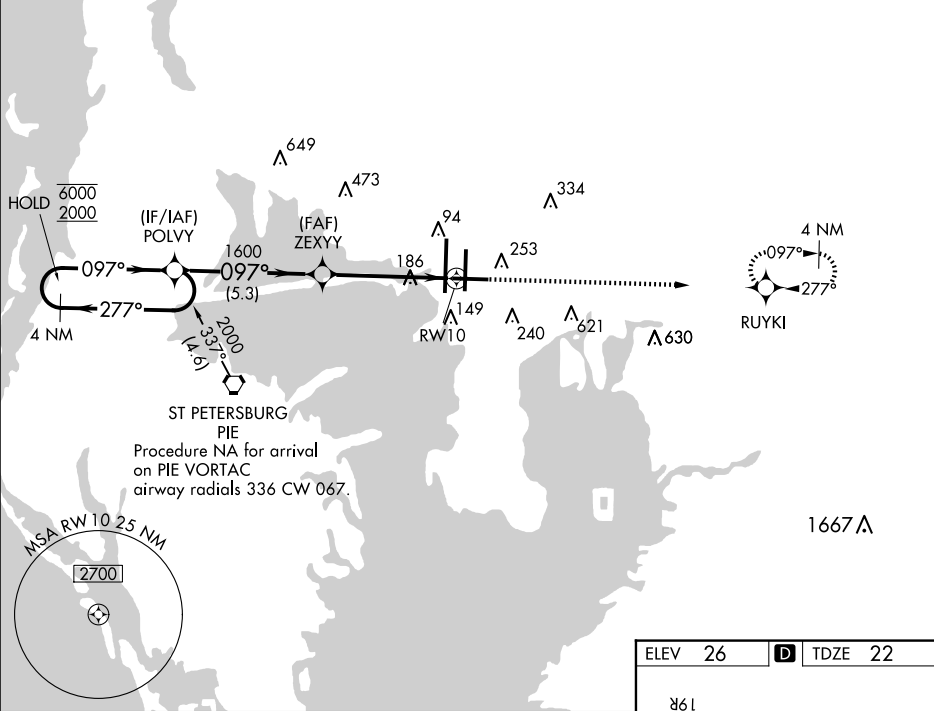


RNP APCH.

▼ For uncompensated Baro-VNAV systems, LNAV/VNAV NA below 2°C or above 54°C.

▲ MISSED APPROACH: Climb to 2000 direct RUYKI and hold.

ARR	D-ATIS	DEP	TAMPA APP CON	TAMPA TOWER	GND CON	CLNC DEL	CPDLC
126.45		128.475	118.5 307.175	119.5 269.4	121.7 269.4	133.6	



CATEGORY	A	B	C	D
LPV DA		272-1	250 (300-1)	
LNAV/VNAV DA		436-1 $\frac{3}{8}$	414 (500-1 $\frac{3}{8}$)	
LNAV MDA	480-1 458 (500-1)		480-1 $\frac{3}{8}$ 458 (500-1 $\frac{3}{8}$)	
CIRCLING	600-1 574 (600-1)		680-1 $\frac{3}{4}$ 654 (700-1 $\frac{3}{4}$)	980-3 954 (1000-3)

